

# ARMSTRONG



## Flex Flanges

FILE NO:	11.16
DATE:	Mar. 05, 2008
SUPERSEDES:	New
DATE:	New

# Flex Flanges

Armstrong Flex Flanges are used in pairs to connect circulating pumps in hydronic systems. These flanges feature di-electric sleeves to prevent possible galvanic corrosion from the contact of dissimilar metals. The Flex Flange is rotating flange design to allow maximum installation flexibility regardless of pump flange orientation. The longer one of the units includes the spring check valve to prevent gravity circulation of the heating medium flowing in the wrong direction. These devices rapidly isolate a circulator to be serviced, and eliminate the need to drain and refill the entire system. The Flex Flange integrates a 2-bolt flange connection (common to small circulating pumps) with a full-port ball valve. This practical "all-in-one" design reduces the number of plumbing connections and results in a more reliable, economical and easily serviced hydronic system.

## ► Features and Benefits

### Compact Durable Design

- Enables pump isolation for easy servicing
- Dielectric sleeve prevents galvanic corrosion
- Corrosion-resistant brass body and flange
- Dual Buna N O-ring seals prevent stem leaks
- ¼ turn open/close lever-style handle
- Available in ½", ¾", 1", 1¼" and 1½" sizes
- NPT and sweat connections

### Easy to Install

- Slotted flange bolt holes
- Includes mounting nuts and bolts
- Rotating flange is faster and easier to install

### Full Port Design

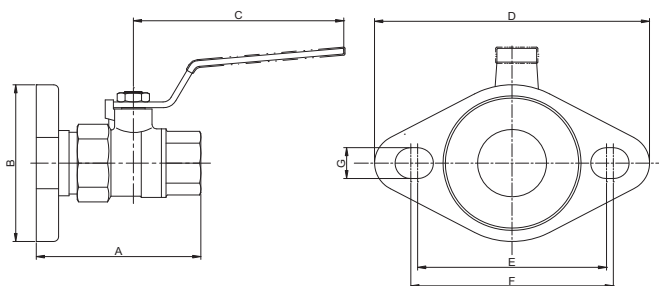
- Ensures minimum system resistance contribution
- Provides "bubble-tight" shut-off when closed

## ► Technical Data

Max. Working Pressure:	150 psig (10.3 bar)
Max. Operating Temperature:	250°F (121°C)

## ► Materials of Construction

Valve and Stem:	Brass
Flange:	Cast Iron/Chromate
Ball:	Chrome plated brass
Stem O-Rings:	Buna N
Seat:	PTFE



## ► Dimensions and Weights

Size	Type	A		B	C	D	E	F	G
		(without check)	(with check)						
½" (DN15)	NPT	2.56 (65)	2.77 (70)	2.70 (68.6)	3.54 (90)	4.63 (117.6)	3.18 (80.8)	3.41 (86.6)	0.53 (13.5)
¾" (DN20)	NPT	2.94 (75)	3.43 (87)	2.70 (68.6)	3.54 (90)	4.63 (117.6)	3.18 (80.8)	3.41 (86.6)	0.53 (13.5)
1" (DN25)	NPT	3.50 (89)	4.17 (106)	2.70 (68.6)	4.53 (115)	4.63 (117.6)	3.18 (80.8)	3.41 (86.6)	0.53 (13.5)
1¼" (DN32)	NPT	4.03 (102)	4.94 (126)	2.70 (68.6)	5.51 (140)	4.63 (117.6)	3.18 (80.8)	3.41 (86.6)	0.53 (13.5)
1½" (DN40)	NPT	4.31 (110)	5.24 (133)	2.70 (68.6)	5.51 (140)	4.63 (117.6)	3.18 (80.8)	3.41 (86.6)	0.53 (13.5)
½" (DN15)	Sweat	2.45 (62)	2.67 (68)	2.70 (68.6)	3.54 (90)	4.63 (117.6)	3.18 (80.8)	3.41 (86.6)	0.53 (13.5)
¾" (DN20)	Sweat	3.04 (77)	3.54 (90)	2.70 (68.6)	3.54 (90)	4.63 (117.6)	3.18 (80.8)	3.41 (86.6)	0.53 (13.5)
1" (DN25)	Sweat	3.69 (94)	4.38 (111)	2.70 (68.6)	4.53 (115)	4.63 (117.6)	3.18 (80.8)	3.41 (86.6)	0.53 (13.5)
1¼" (DN32)	Sweat	4.16 (106)	5.07 (129)	2.70 (68.6)	5.51 (140)	4.63 (117.6)	3.18 (80.8)	3.41 (86.6)	0.53 (13.5)
1½" (DN40)	Sweat	4.56 (116)	5.49 (139)	2.70 (68.6)	5.51 (140)	4.63 (117.6)	3.18 (80.8)	3.41 (86.6)	0.53 (13.5)

Note: All dimensions are in inches (mm) and weights in lbs. (kg)

## ► Typical Specifications

Furnish and install, as shown on plans and in accordance with manufacturer's installation instructions, Armstrong Flex Flange, circulator isolation flange kit. The Isolation Flange shall be a full-port isolation valve with an integral flanged connection for the circulating pump with slotted holes. The flanges will feature dielectric sleeves and unrestricted rotation to prevent galvanic corrosion and provide easy alignment of the fixed pipe flanges. The downstream flange shall feature a low pressure drop, check valve to maintain pump flow characteristics while preventing reverse flow or gravity circulation. The Flex Flange shall be constructed with brass body and flange, chrome plated brass ball, PTFE seat, dual Buna N O-ring seals and a lever-style handle.

EXPERIENCE BUILDING...

**S. A. Armstrong Limited**  
23 Bertrand Avenue  
Toronto, Ontario  
Canada, M1L 2P3  
T: (416) 755-2291  
F (Main): (416) 759-9101

**Armstrong Pumps Inc.**  
93 East Avenue  
North Tonawanda, New York  
U.S.A., 14120-6594  
T: (716) 693-8813  
F: (716) 693-8970

**Armstrong Holden Brooke Pullen**  
Wenlock Way  
Manchester  
United Kingdom, M12 5JL  
T: +44 (0) 161 223 2223  
F: +44 (0) 161 220 9660

**ARMSTRONG** 



© S.A. Armstrong Limited 2008

For Armstrong locations worldwide, please visit [www.armstrongpumps.com](http://www.armstrongpumps.com)