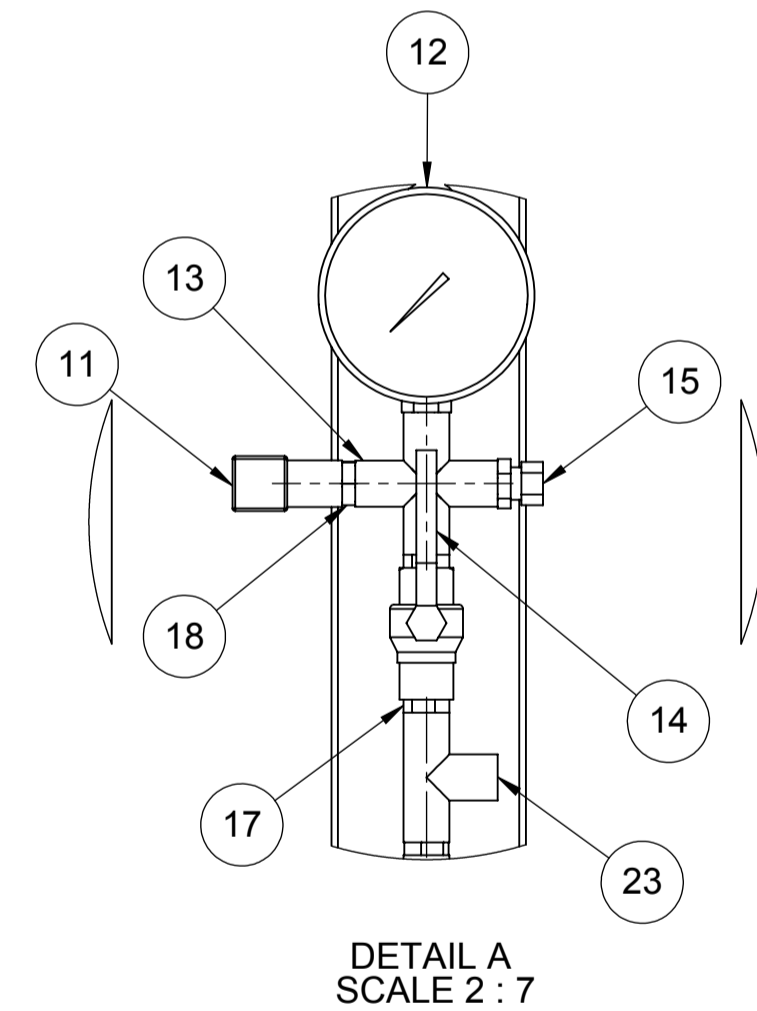
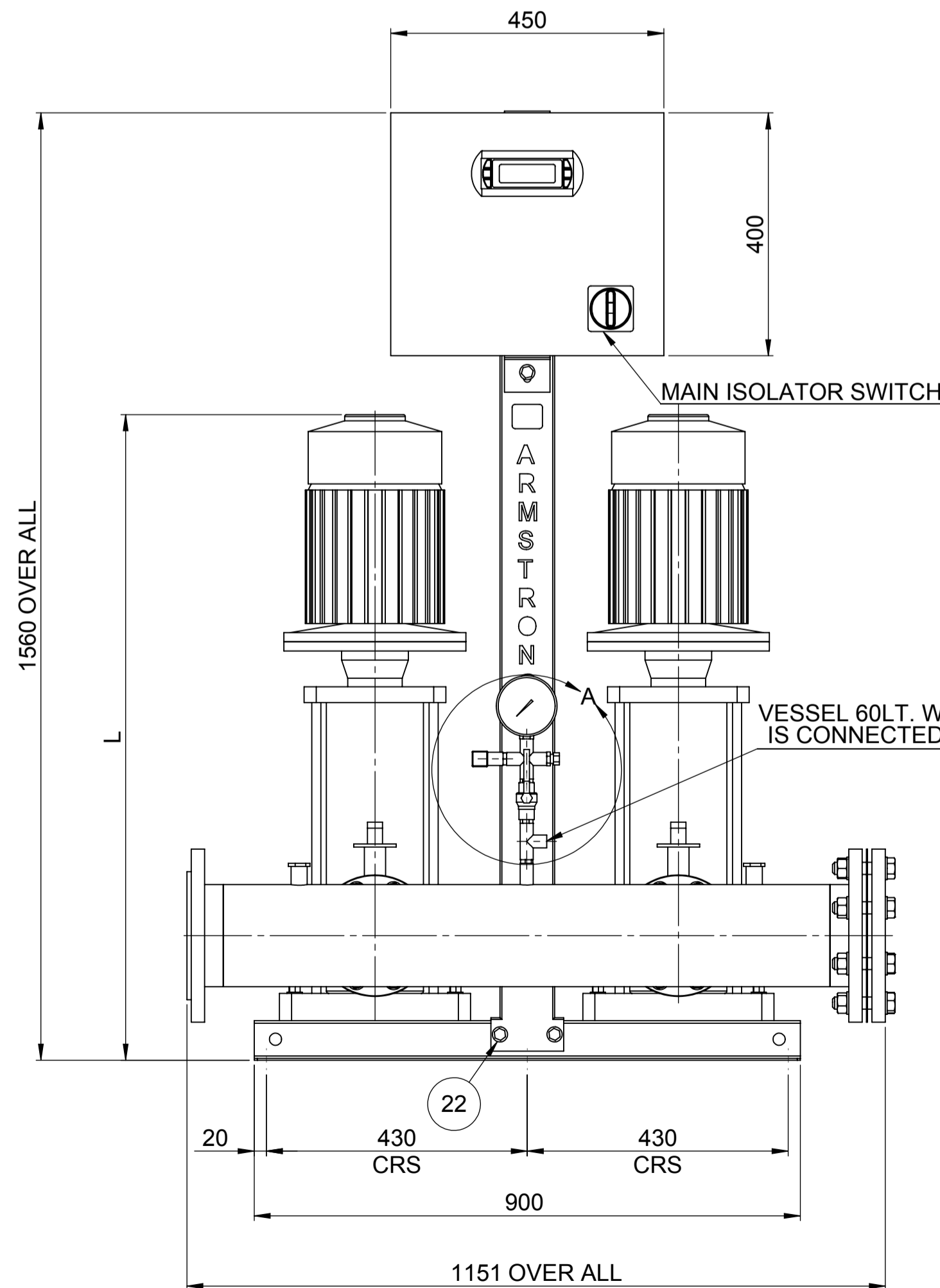
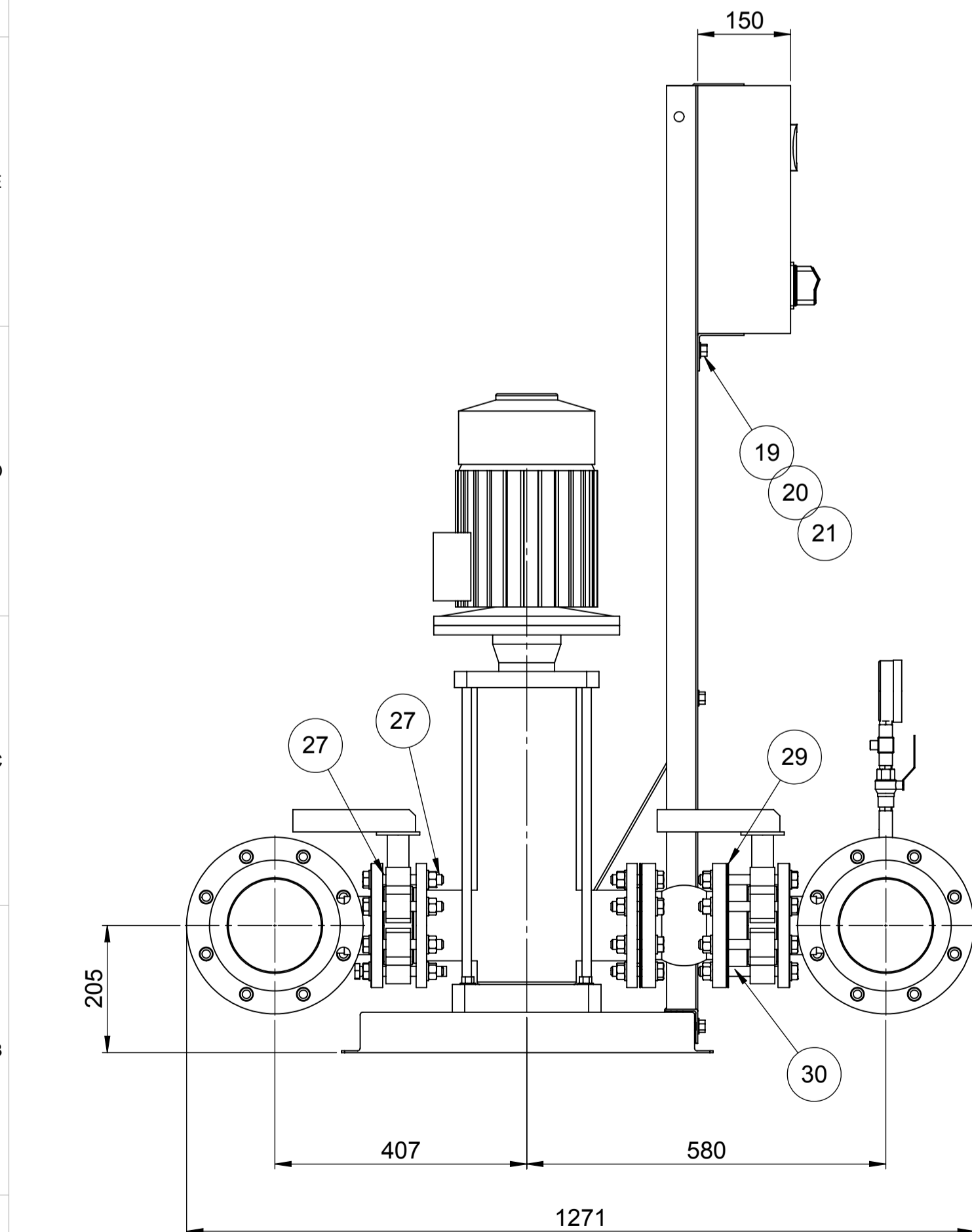
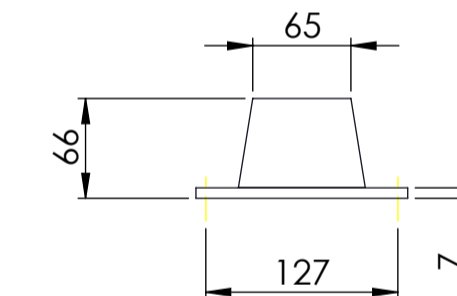
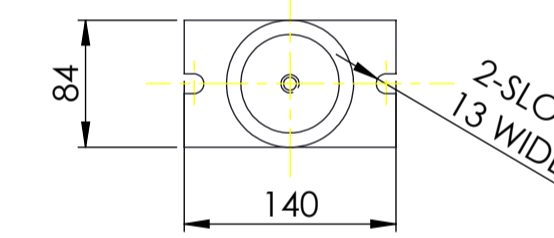


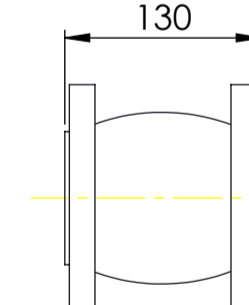
PUMP SIZE	MOTOR KW	FLC AMPS	PUMP WEIGHT KGS	SET WEIGHT KGS	VESSEL SIZE LTRS	WORKING PRESSURE MAX BAR	TEST PRESSURE MAX BAR	STARTING CURRENT	L MM
SV4601	4	8.5	80	370	60	2.6	24	20	901



ANTI-VIBRATION MOUNTINGS OPTIONAL ONLY SUPPLIED WHEN ORDERED (6-PER SET K2092/10)



FLEXIBLE CONNECTORS OPTIONAL ONLY SUPPLIED WHEN ORDERED (2-PER SHEET)



NOTE:-

- 1) MAIN POWER SUPPLY TO PANEL MUST BE SIZED TO COVER ALL PUMPS RUNNING AT THE SAME TIME
- 2) LARGE STORAGE VESSELS, IF ORDERED, WILL BE SUPPLIED LOOSE FOR POSITIONING FOR CLIENT TO SUIT THE AVAILABLE FLOOR SPACE. CLIENT IS TO PROVIDE A CONNECTION FROM THE VESSEL TO THE DELIVERY PIPEWORK ADJACENT TO THE SET. ISOLATING AND DRAIN VALVES SHOULD BE FITTED IN THIS CONNECTION
- 3) 60 Lt TANK WILL BE SUPPLIED LOOSE AND SHOULD BE ASSEMBLED ON SITE
- 4) FLANGES ARE AVAILABLE BOTH IN 16 & 25 BAR VERSION
- 5) FOR STANCHION SELECTION USE DRAWING NO. PK14967

ITEM NO	DESCRIPTION	NO. OFF
1	BASE PLATE	1
2	BOLT - M12	8
3	WASHER - M12	8
4	CAGE NUT - M12	8
5	VMS PUMP	2
6	SUCTION/DISCHARGE MANIFOLD ASSY	2
7	ISOLATING VALVE 3"	4
8	NRV 3"	2
9	SUPPORT RIB	1
10	STANCHION	1
11	PRESSURE TRANSDUCER	1
12	PRESSURE GAUGE	1
13	FEMALE CROSS 1/2"	1
14	ISOLATING VALVE 1/2"	1
15	AIR VENT 1/4"	1
16	CONTROL PANEL	1
17	1/2" NIPPLE	3
18	1/2" x 1/4" REDUCING BUSH	3
19	BOLT - M10	9
20	WASHER - M10	9
21	NUT - M10	3
22	CAGE NUT - M10	6
23	1/2" T	1
FASTENERS FOR PN16		
24	BOLT - M16	16
25	WASHER - M16	96
26	NUT - M16	80
27	STUD - M16x54	48
28	STUD - M16x74	16
FASTENERS FOR PN25		
24	BOLT - M16	16
25	WASHER - M16	96
26	NUT - M16	80
27	STUD - M16x74	48
28	STUD - M16x84	16
29	GASKET - 80NB	4
30	SPACER PIECE - 80NB	2

REV:	DATE:	DRN BY:	CHECKED BY:	APP. BY:

DESIGN No.	PATTERN No.	FILE NAME	FINISH

PART No.	JOB No.	DESIGN No.	PATTERN No.	FILE NAME	FINISH

UNLESS OTHERWISE SPECIFIED:	DRAWN	CHECKED	Q.A.	ENG APPR.	COMMENTS:
DIMENSIONS ARE IN MM WELD SYMBOLS TO BS 499 SURFACE FINISH SHOWN IN U.S. MACHINE WHERE SHOWN IN U.S. TO TOLERANCE ± 0.3	PRAKASH	01/03/08			

ARMSTRONG

TITLE: **6800 HMP SERIES 2PUMP SV46**

SIZE: **A1** DRG. NO.: **PX10756** REV: **B**

DRAWING RELEASE LEVEL: **DO NOT SCALE** SCALE: 1:8 WEIGHT: KG SHEET 1 OF 1