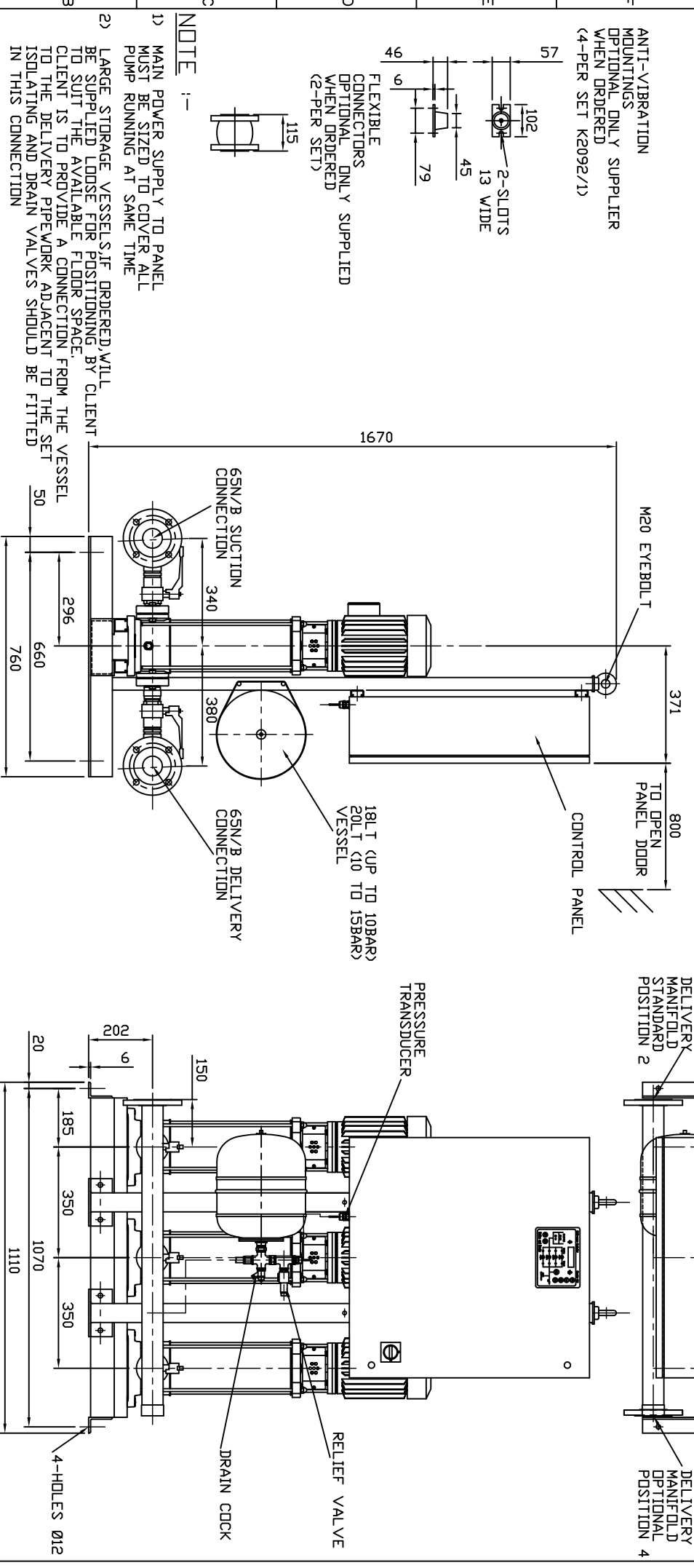


PUMP SIZE	MOTOR KW	FLC AMPS 3x415V	PUMP WEIGHT KGS	SET WEIGHT KGS
802T11T	1.10	2.61	25.5	294
803T15T	1.50	3.45	32.0	313
804T22T	2.20	5.03	34.0	319
805T22T	2.20	5.03	35.0	323
806T30T	3.00	6.22	42.0	343
808T40T	4.00	8.14	58.5	393
809T40T	4.00	8.14	59.5	396

ALL FLANGES TO BS4504
 MAX WORKING PRESSURE
 TEST PRESSURE

16BAR
 15BAR
 22.5BAR

UNCONTROLLED



NOTE :-

- 1) MAIN POWER SUPPLY TO PANEL MUST BE SIZED TO COVER ALL PUMP RUNNING AT SAME TIME
- 2) LARGE STORAGE VESSELS IF ORDERED WILL BE SUPPLIED LOOSE FOR POSITIONING BY CLIENT TO SUIT THE AVAILABLE FLOOR SPACE. CLIENT IS TO PROVIDE A CONNECTION FROM THE VESSEL TO THE DELIVERY PIPEWORK ADJACENT TO THE SET ISOLATING AND DRAIN VALVES SHOULD BE FITTED IN THIS CONNECTION

LAST MODIFICATION DETAILS
 DRAWING BORDER CHANGED

ALL DIMENSIONS IN mm
 DRAWN TO BS308
 WELDING SYMBOLS TO BS499
 SURFACE FINISH SHOWN IN MICROMETERS
 MACHINE WHERE SHOWN TO TOLERANCE ± 0.3MM UNLESS OTHERWISE STATED

JOB No.	PART No.	WEIGHT KG	FILE NAME
-	-	-	PX10281-4
DESIGN No.	PATTERN No.	MATERIAL	MAT'L SPEC.
-	-	-	-

TITLE
 GENERAL ARRANGEMENT
 HYDRPAK HML3 SET
 8-PUMP MODELS

DRG No. PX10281-4

DATE 02/10/2002	DRN BSD
CHK EGU	APP EGU
SCALE NTS	SHEET 1 OF 1

VENLOCK WAY, MANCHESTER, M12 5JL
 TEL: +44 (0) 161 223 2223

ARMSTRONG HOLDEN BROOKE PULLEN