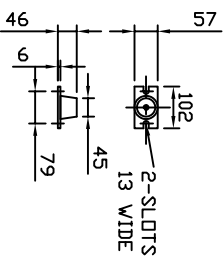


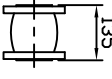
ALL FLANGES TO BS4504
 MAX WORKING PRESSURE 16BAR
 TEST PRESSURE 22.5BAR

MAIN PUMP SIZE	MOTOR KW	FLC AMPS 3x415V	PUMP WEIGHT KGS	Jockey PUMP SIZE	MOTOR KW	FLC AMPS 3x415V	PUMP WEIGHT KGS	SET WEIGHT KGS
160E22T	2.20	5.03	32.0	404T07T	0.75	2.02	21.0	466
160F30T	3.00	6.22	38.0	406T11T	1.10	2.61	22.5	486
1604F40T	4.00	8.14	55.5	407T11T	1.10	2.61	23.0	539
1605F55T	5.50	11.0	68.0	409T15T	1.50	3.45	30.0	583
1606F55T	5.5	11.0	69.0	411T2T	2.20	5.03	32.0	593
1607F75T	7.50	14.6	74.0	413T2T	2.20	5.03	33.0	648
1608F75T	7.50	14.6	75.0	414T30T	3.00	6.22	39.0	657

ANTI-VIBRATION MOUNTINGS OPTIONAL ONLY SUPPLIER WHEN ORDERED (4-PER SET K2092/1)

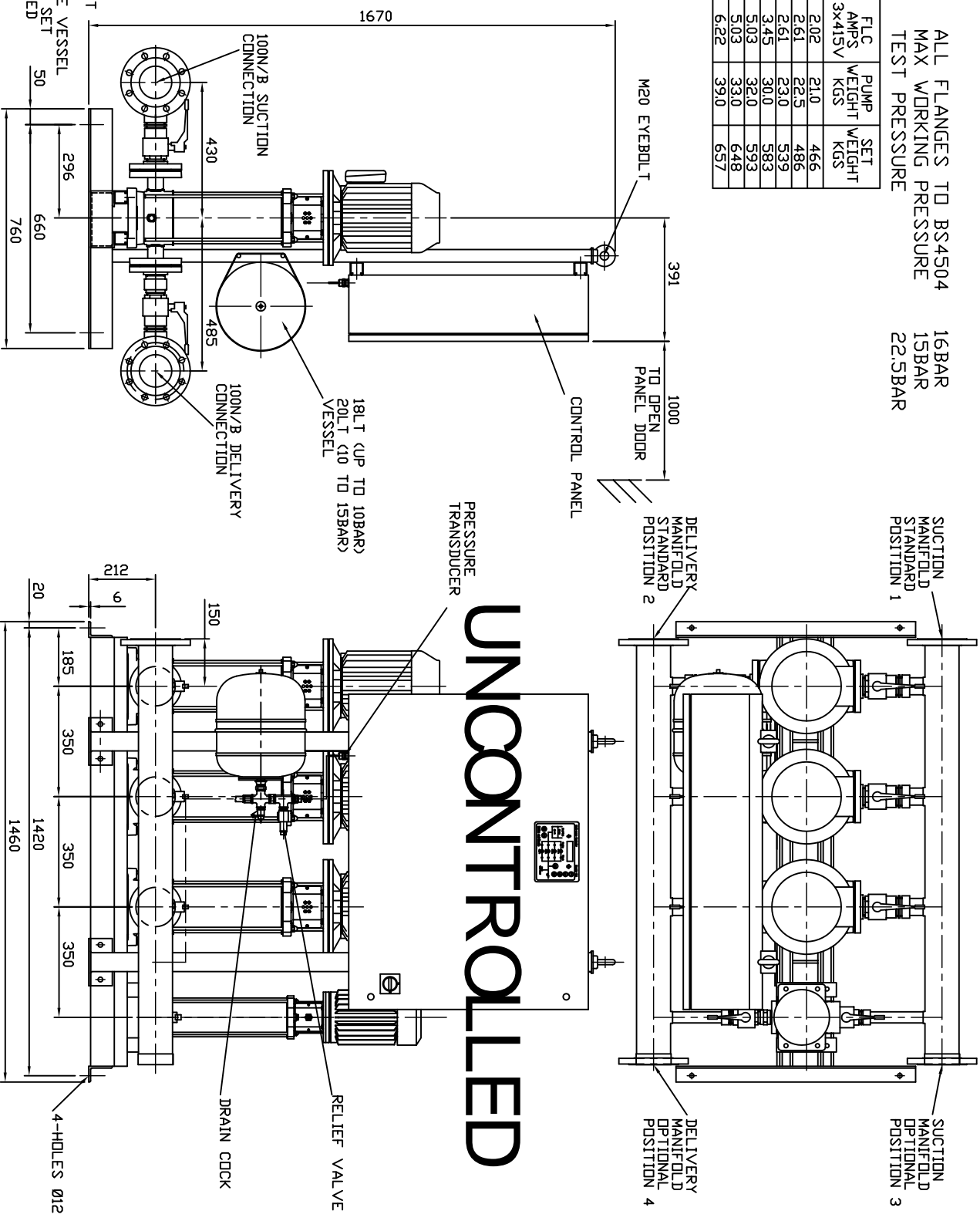


FLEXIBLE CONNECTORS OPTIONAL ONLY SUPPLIED WHEN ORDERED (2-PER SET)



NOTE :-

- 1) MAIN POWER SUPPLY TO PANEL MUST BE SIZED TO COVER ALL PUMP RUNNING AT SAME TIME
- 2) LARGE STORAGE VESSELS IF ORDERED WILL BE SUPPLIED LOOSE FOR POSITIONING BY CLIENT TO SUIT THE AVAILABLE FLOOR SPACE. CLIENT IS TO PROVIDE A CONNECTION FROM THE VESSEL TO THE DELIVERY PIPEWORK ADJACENT TO THE SET ISOLATING AND DRAIN VALVES SHOULD BE FITTED IN THIS CONNECTION



UNCONTROLLED

LAST MODIFICATION DETAILS

DRAWING BORDER CHANGED

ISSUE 4	DATE 15/02/2006	DRN PJB	APP PJB
---------	-----------------	---------	---------

ALL DIMENSIONS IN mm
 DRAWN TO BS308
 WELDING SYMBOLS TO BS499
 SURFACE FINISH SHOWN IN MICROMETERS
 MACHINE WHERE SHOWN TO TOLERANCE ± 0.3MM UNLESS OTHERWISE STATED

JOB No.	PART No.	WEIGHT KG	FILE NAME
-	-	-	PX10289-4
DESIGN No.	PATTERN No.	MATERIAL	MAT'L SPEC.
-	-	-	-

TITLE
 GENERAL ARRANGEMENT
 HYDROPAC HML3+JOCKEY
 SET 16-PUMP+4-JOCKEY
 PUMP MODELS

DRG No.	PX10289-4
DATE 11/10/2002	DRN BSD
CHK EGU	APP EGU
SCALE NTS	SHEET 1 OF 1

ARMSTRONG HOLDEN BROOKE PULLEN

VENLOCK WAY, MANCHESTER, M12 5JL
 TEL: +44 (0) 161 223 2223