

REMOVE BURRS AND SHARP EDGES

IF IN DOUBT ASK

DO NOT SCALE

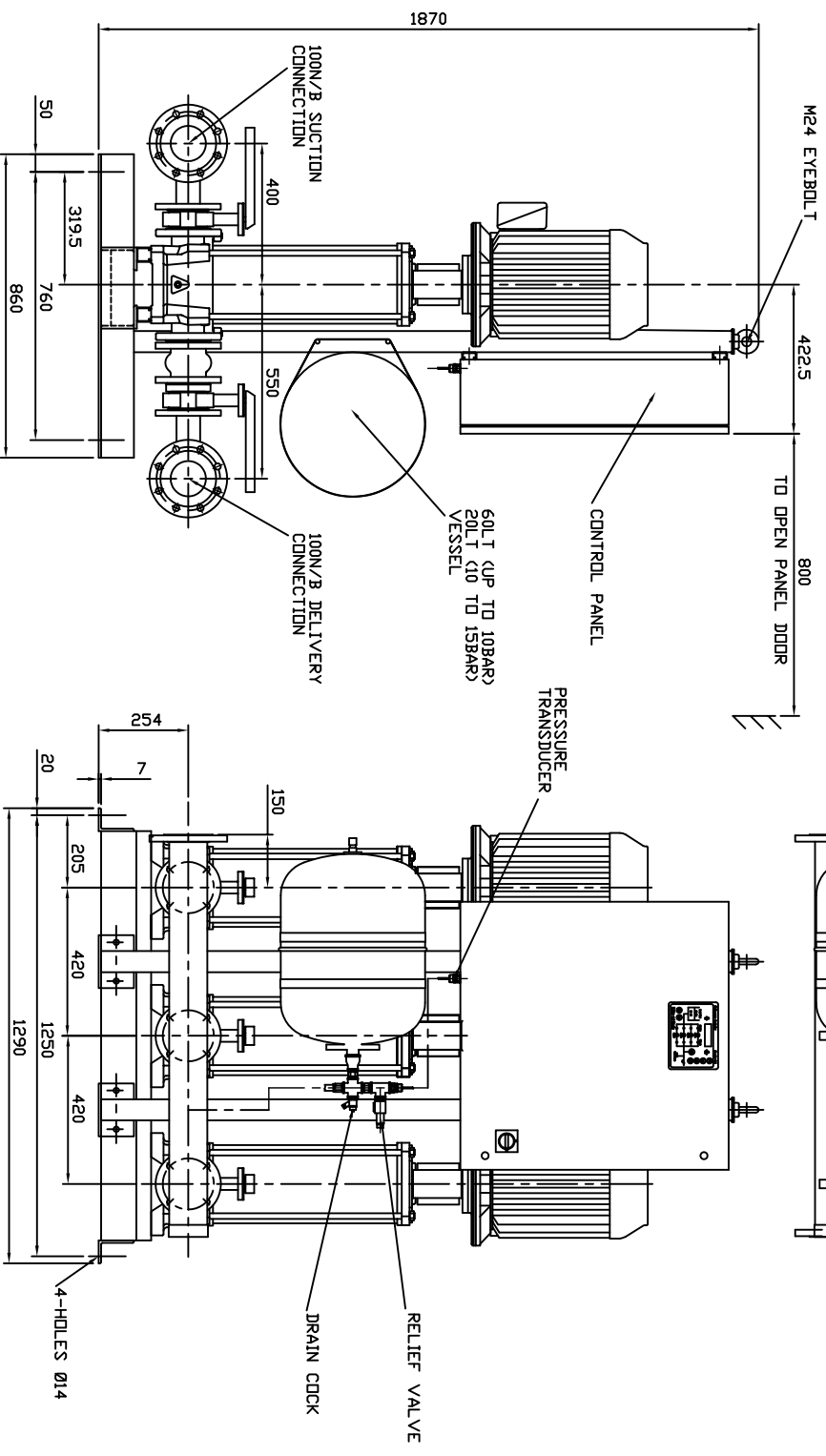
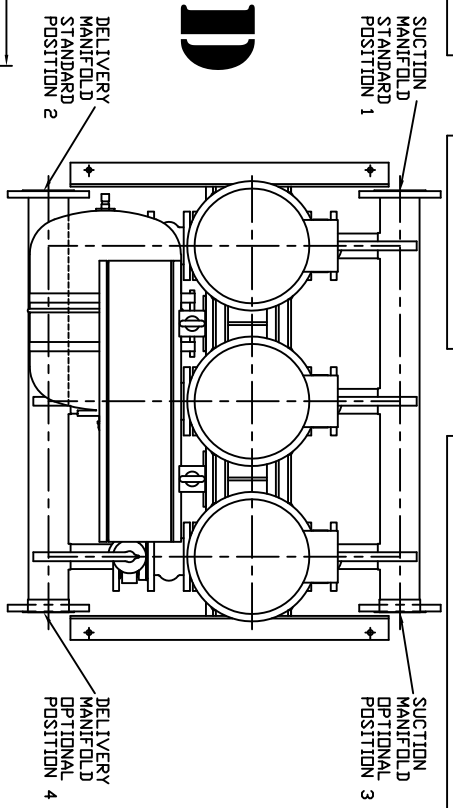
THIRD ANGLE PROJECTION

PUMP SIZE	MOTOR KW	FLC AMPS 3x415V	PUMP WEIGHT KGS	SET WEIGHT KGS
3301/1F22T	2.20	5.03	65	579
3301F30T	3.00	6.01	70	594
3302/2F40T	4.00	8.02	78	618
3302/1F40T	4.00	8.02	78	618
3302F55T	5.50	10.0	96	684
3303/2F55T	5.50	10.0	100	696
3303/1F75T	7.50	13.4	106	714
3303F75T	7.50	13.4	106	714
3304/2F75T	11.0	20.0	140	816
3304/1F10T	11.0	20.0	140	816
3305/2F10T	11.0	20.0	144	828
3305/1F10T	11.0	20.0	144	828
3305F150T	15.0	27.0	174	918
3306/2150T	15.0	27.0	178	930
3306/1F150T	15.0	27.0	178	930

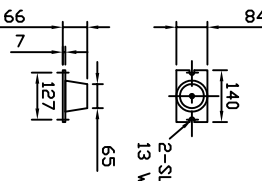
# UNCONTROLLED

ALL FLANGES TO BS4504  
MAX WORKING PRESSURE  
TEST PRESSURE

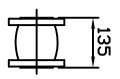
16BAR  
15BAR  
22.5BAR



ANTI-VIBRATION MOUNTINGS OPTIONAL, ONLY SUPPLIER WHEN ORDERED (<4-PER SET K209E/10)



FLEXIBLE CONNECTORS, ONLY SUPPLIED OPTIONAL, WHEN ORDERED (<2-PER SET)



**NOTE :-**

- 1) MAIN POWER SUPPLY TO PANEL MUST BE SIZED TO COVER ALL PUMP RUNNING AT SAME TIME
- 2) LARGE STORAGE VESSELS, IF ORDERED, WILL BE SUPPLIED LOOSE FOR POSITIONING BY CLIENT TO SUIT THE AVAILABLE FLOOR SPACE. CLIENT IS TO PROVIDE A CONNECTION FROM THE VESSEL TO THE DELIVERY PIPEWORK ADJACENT TO THE SET ISOLATING AND DRAIN VALVES SHOULD BE FITTED IN THIS CONNECTION

LAST MODIFICATION DETAILS

DRAWING BORDER CHANGED

ISSUE 1	DATE 15/02/2006	DRN PJB	APP PJB
CHK PJB			

ALL DIMENSIONS IN mm  
DRAWN TO BS308  
WELDING SYMBOLS TO BS499  
SURFACE FINISH SHOWN IN MICROMETERS  
MACHINE WHERE SHOWN TO TOLERANCE ± 0.3MM UNLESS OTHERWISE STATED

JOB No.	PART No.	WEIGHT KG	FILE NAME
-	-	-	Px10486-1
DESIGN No.	PATTERN No.	MATERIAL	MAT'L SPEC.
-	-	-	-

TITLE  
GENERAL ARRANGEMENT  
HYDRPAK HML3 SET  
33-PUMP MODELS

DRG No.	PX10486-1
DATE 23/06/2004	DRN BSD
CHK EGU	APP EGU
SCALE NTS	SHEET 1 OF 1

**ARMSTRONG HOLDEN BROOKE PULLEN**  
VENLOCK WAY, MANCHESTER, M12 5JL  
TEL: +44 (0) 161 223 2223