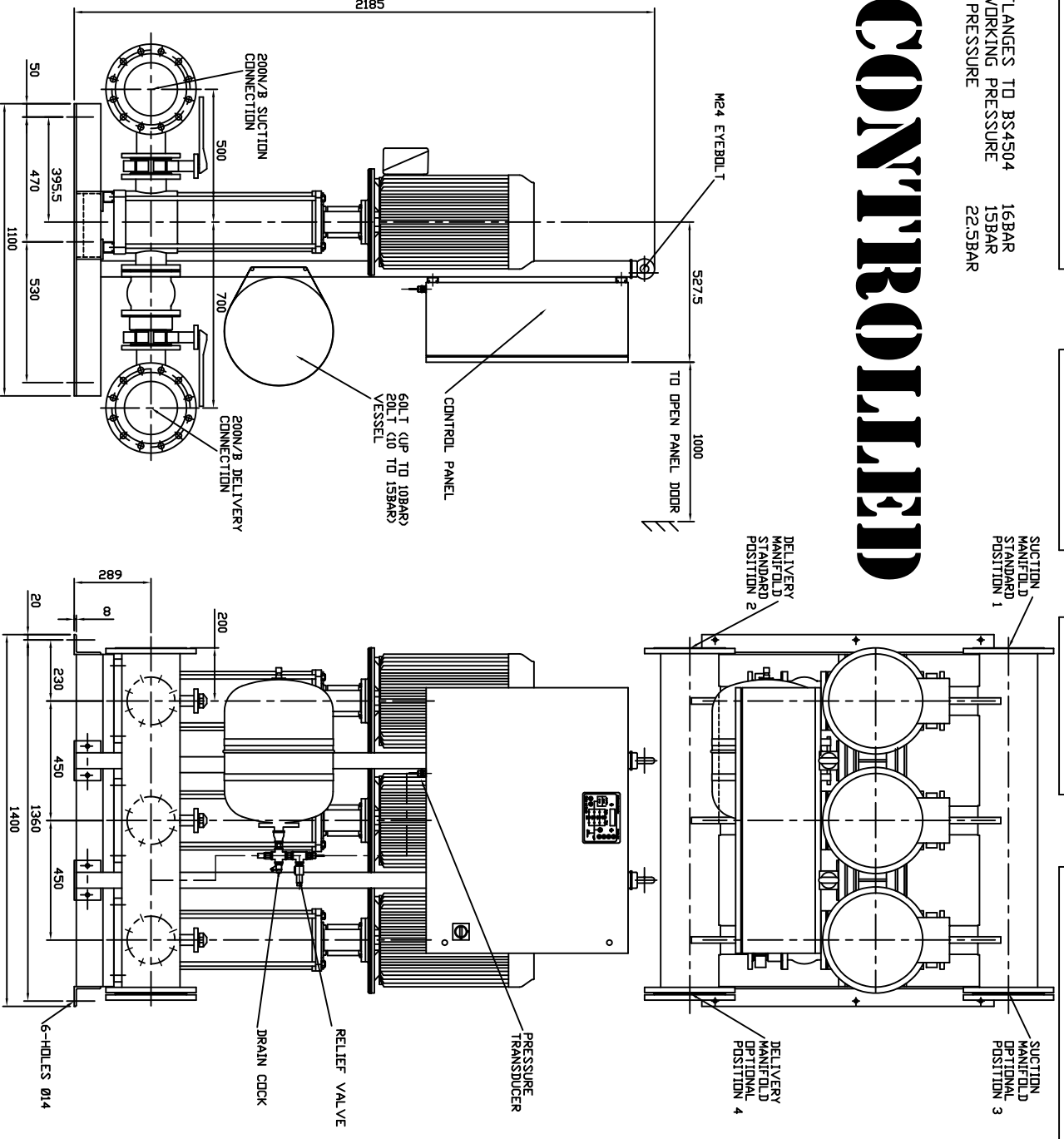


PUMP SIZE	MOTOR KW	FLC AMPS 3x415V	PUMP WEIGHT KGS	SET WEIGHT KGS
6601/1F40T	4.00	8.02	69	634
6601/1F51T	5.30	10.0	107	688
6602/1F75T	7.30	13.4	118	721
6602/1F10T	11.0	20.0	148	811
6602/1F11T	11.0	20.0	148	811
6603/1F150T	13.0	27.0	184	919
6603/1F150T	13.0	27.0	184	919
6603/1F185T	18.5	33.1	202	973
6604/1F185T	18.5	33.1	207	988
6604/1F220T	22.0	38.9	213	1006
6604/1F220T	22.0	38.9	213	1006
6605/1F300T	30.0	54.0	237	1078

ALL FLANGES TO BS4504  
 MAX WORKING PRESSURE 15BAR  
 TEST PRESSURE 22.5BAR

# UNCONTROLLED



ANTI-VIBRATION MOUNTINGS. OPTIONAL. ONLY SUPPLIER WHEN ORDERED (6-PER SET K2092/10)

FLEXIBLE CONNECTORS. OPTIONAL. ONLY SUPPLIED WHEN ORDERED (2-PER SET)

**NOTE :-**

- 1) MAIN POWER SUPPLY TO PANEL MUST BE SIZED TO COVER ALL PUMP RUNNING AT SAME TIME
- 2) LARGE STORAGE VESSELS IF ORDERED WILL BE SUPPLIED LOOSE FOR POSITIONING BY CLIENT TO SUIT THE AVAILABLE FLOOR SPACE. CLIENT IS TO PROVIDE A CONNECTION FROM THE VESSEL TO THE DELIVERY PIPEWORK ADJACENT TO THE SET ISOLATING AND DRAIN VALVES SHOULD BE FITTED IN THIS CONNECTION

LAST MODIFICATION DETAILS  
 DRAWING BORDER CHANGED

ISSUE 1	DATE 15/02/2006	DRN PJB	APP PJB
---------	-----------------	---------	---------

ALL DIMENSIONS IN mm DRAWN TO BS308 WELDING SYMBOLS TO BS499 SURFACE FINISH SHOWN IN MICRO METERS MACHINE WHERE SHOWN TO TOLERANCE ± 0.3MM UNLESS OTHERWISE STATED			
JOB No.	PART No.	WEIGHT KG	FILE NAME
-	-	-	PX10491-1
DESIGN No.	PATTERN No.	MATERIAL	MATL SPEC.
-	-	-	-

TITLE  
 GENERAL ARRANGEMENT  
 HYDRPAK HML3 SET  
 66-PUMP MODELS

DRG No.	PX10491-1
DATE 02/07/2004	DRN BSD
CHK EGU	APP EGU
SCALE NTS	SHEET 1 OF 1

**ARMSTRONG HOLDEN BROOKE PULLEN**

VENLOCK WAY, MANCHESTER, M12 5JL  
 TEL: +44 (0) 161 223 2223