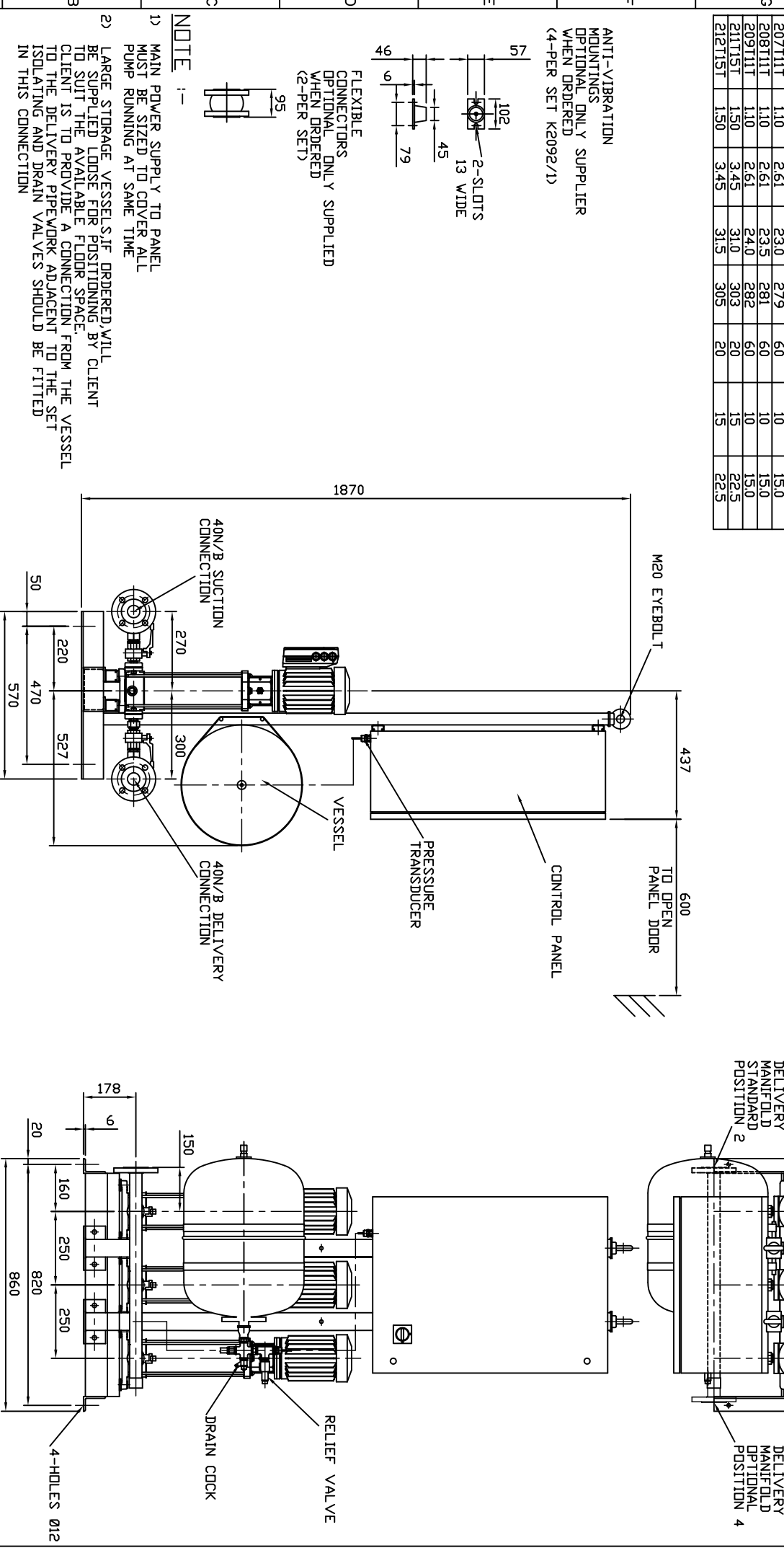


PUMP SIZE	MOTOR KW	FLC AMPS	PUMP WEIGHT KGS	SET WEIGHT KGS	VESSEL SIZE LITRES	WORKING PRESSURE BAR	TEST PRESSURE BAR
202T05T	0.55	1.43	17.5	26.3	60	10	15.0
203T05T	0.55	1.43	18.0	26.4	60	10	15.0
204T05T	0.55	1.43	19.0	26.7	60	10	15.0
205T07T	0.75	2.02	21.5	27.5	60	10	15.0
206T07T	0.75	2.02	22.0	27.6	60	10	15.0
207T11T	1.10	2.61	23.0	27.9	60	10	15.0
208T11T	1.10	2.61	23.5	28.1	60	10	15.0
209T11T	1.10	2.61	24.0	28.2	60	10	15.0
211T15T	1.50	3.45	31.0	30.3	20	15	22.5
212T15T	1.50	3.45	31.5	30.5	20	15	22.5

UNCONCONTROLLED

ALL FLANGES TO BS4504 16BAR



FLEXIBLE CONNECTORS OPTIONAL ONLY SUPPLIED WHEN ORDERED (2-PER SET)

NOTE :-

- 1) MAIN POWER SUPPLY TO PANEL MUST BE SIZED TO COVER ALL PUMP RUNNING AT SAME TIME
- 2) LARGE STORAGE VESSELS, IF ORDERED, WILL BE SUPPLIED LOOSE FOR POSITIONING BY CLIENT TO SUIT THE AVAILABLE FLOOR SPACE. CLIENT IS TO PROVIDE A CONNECTION FROM THE VESSEL TO THE DELIVERY PIPEWORK ADJACENT TO THE SET ISOLATING AND DRAIN VALVES SHOULD BE FITTED IN THIS CONNECTION

LAST MODIFICATION DETAILS
DRAWING BORDER CHANGED

ISSUE 1	DATE 15/02/2006	DRN PJB	APP PJB
ALL DIMENSIONS IN mm DRAWN TO BS308 WELDING SYMBOLS TO BS499 SURFACE FINISH SHOWN IN MICROMETERS MACHINE WHERE SHOWN TO TOLERANCE ± 0.3MM UNLESS OTHERWISE STATED			

JOB No.	PART No.	WEIGHT KG	FILE NAME
-	-	-	Px10462-1
DESIGN No.	PATTERN No.	MATERIAL	MATL SPEC.
-	-	-	-

TITLE
GENERAL ARRANGEMENT
HYDROPAK IVSL3 SET
2-PUMP MODELS C/W
VLT8000 AQUA CONTROL

DRG No.	PX10462-1
DATE 19/08/2004	DRN BSD
CHK EGU	APP EGU
SCALE	NTS
SHEET	1 OF 1

ARMSTRONG HOLDEN BROOKE PULLEN
VENLOCK WAY, MANCHESTER, M12 5JL
TEL: +44 (0) 161 223 2223