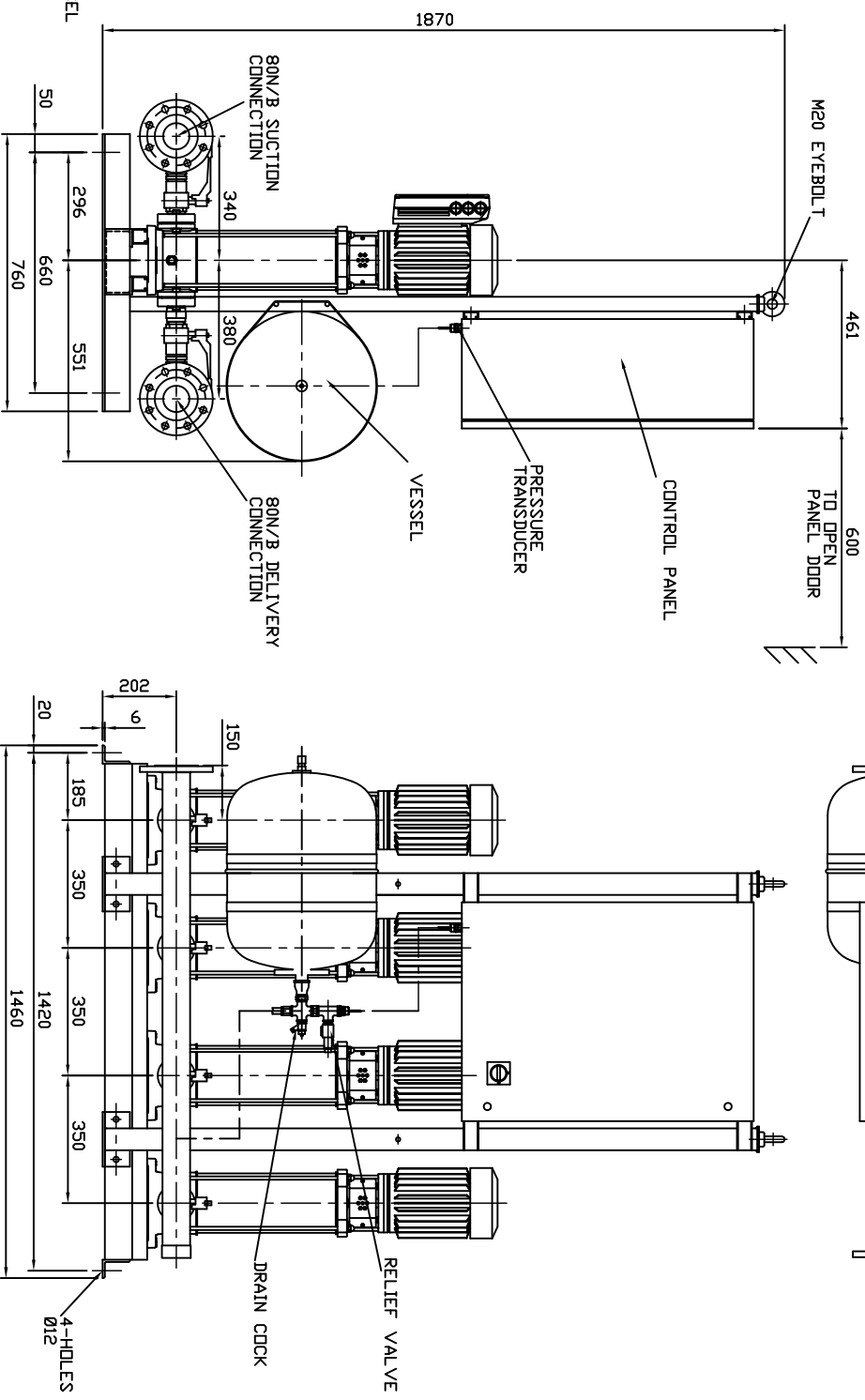
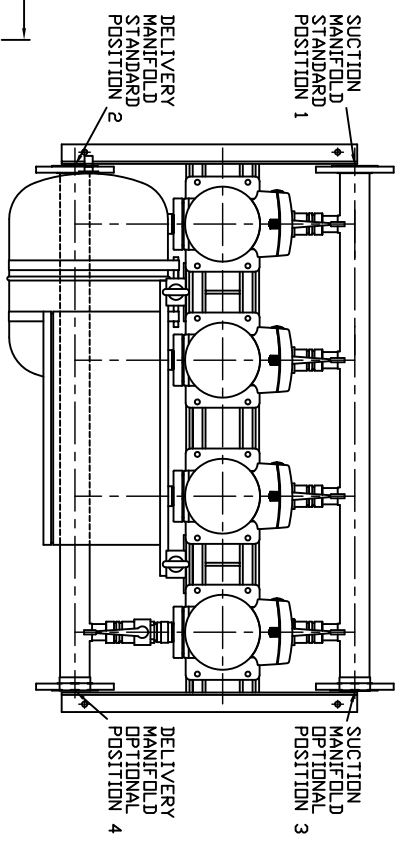


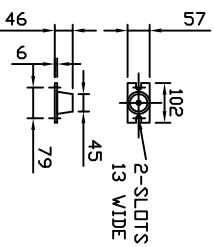
| PUMP SIZE | MOTOR KW | FLC AMPS 3x415V | PUMP WEIGHT KGS | SET WEIGHT KGS | VESSEL SIZE LITRES | WORKING PRESSURE MAX-BAR | TEST PRESSURE BAR |
|-----------|----------|-----------------|-----------------|----------------|--------------------|--------------------------|-------------------|
| 80E111T   | 110      | 2.61            | 25.5            | 388            | 60                 | 10                       | 15.0              |
| 80J311T   | 150      | 3.45            | 32.0            | 414            | 60                 | 10                       | 15.0              |
| 804122T   | 2.20     | 5.03            | 34.0            | 422            | 60                 | 10                       | 15.0              |
| 805T22T   | 2.20     | 5.03            | 35.0            | 426            | 60                 | 10                       | 15.0              |
| 806T30T   | 3.00     | 6.22            | 42.0            | 454            | 60                 | 10                       | 15.0              |
| 808140T   | 4.00     | 8.14            | 58.5            | 520            | 20                 | 15                       | 22.5              |
| 809T40T   | 4.00     | 8.14            | 59.5            | 524            | 20                 | 15                       | 22.5              |

ALL FLANGES TO BS4504 16BAR

# UNCONTROLLED



ANTI-VIBRATION MOUNTINGS OPTIONAL ONLY SUPPLIER WHEN ORDERED <4-PER SET K2092/1>



FLEXIBLE CONNECTORS OPTIONAL ONLY SUPPLIED WHEN ORDERED (<2-PER SET)

**NOTE 1-**

- 1) MAIN POWER SUPPLY TO PANEL MUST BE SIZED TO COVER ALL PUMP RUNNING AT SAME TIME
- 2) LARGE STORAGE VESSELS, IF ORDERED, WILL BE SUPPLIED LOOSE FOR POSITIONING BY CLIENT TO SUIT THE AVAILABLE FLOOR SPACE. CLIENT IS TO PROVIDE A CONNECTION FROM THE VESSEL TO THE DELIVERY PIPEWORK ADJACENT TO THE SET ISOLATING AND DRAIN VALVES SHOULD BE FITTED IN THIS CONNECTION

LAST MODIFICATION DETAILS

|                        |  |  |             |           |             |
|------------------------|--|--|-------------|-----------|-------------|
| DRAWING BORDER CHANGED | ALL DIMENSIONS IN mm   | JOB No.  | PART No.    | WEIGHT KG | FILE NAME   |
|                        | DRAWN TO BS308   | -  | -           | -         | PX10471-1   |
|                        | WELDING SYMBOLS TO BS499   | DESIGN No.   | PATTERN No. | MATERIAL  | MAT'L SPEC. |
|                        | SURFACE FINISH SHOWN IN MICROMETERS                              | -  | -           | -         | -           |
|                        | MACHINE WHERE SHOWN TO TOLERANCE ± 0.3MM UNLESS OTHERWISE STATED | THIS DRAWING IS THE PRIVATE AND CONFIDENTIAL PROPERTY OF ARMSTRONG HOLDEN BROOKE PULLEN LTD. ALL COPYRIGHT, MANUFACTURING AND SALES RIGHTS RESERVED. |             |           |             |

|         |                 |         |         |
|---------|-----------------|---------|---------|
| ISSUE 1 | DATE 15/02/2006 | DRN PJB | APP PJB |
|---------|-----------------|---------|---------|

TITLE: GENERAL ARRANGEMENT HYDROPAK IVSL4 SET 8-PUMP MODELS C/W VLT8000 AQUA CONTROL

DRG No. PX10471-1

DATE 19/08/2004 DRN BSD

CHK EGJ APP EGJ

SCALE NTS SHEET 1 OF 1

**ARMSTRONG HOLDEN BROOKE PULLEN**

VENLOCK WAY, MANCHESTER, M12 5JL  
TEL: +44 (0) 161 223 2223