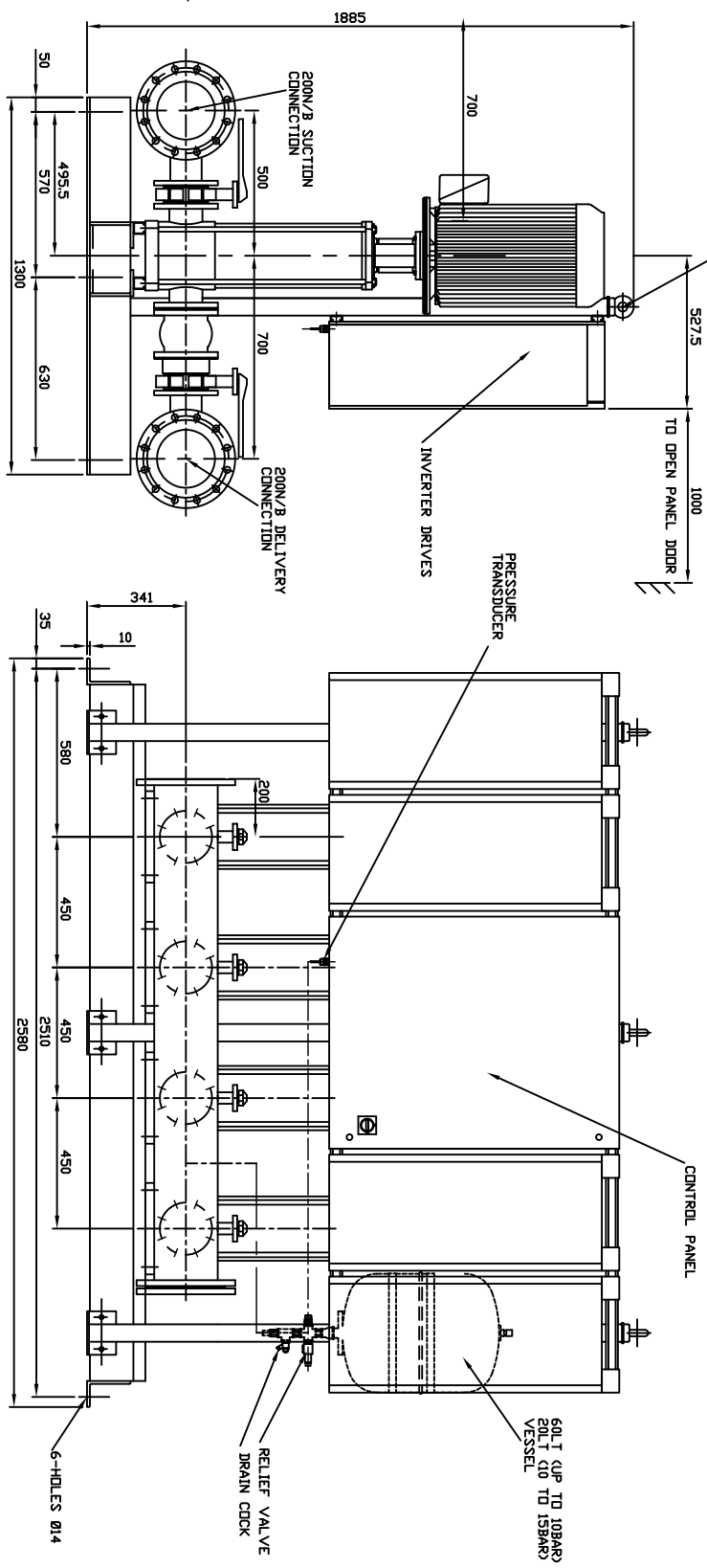
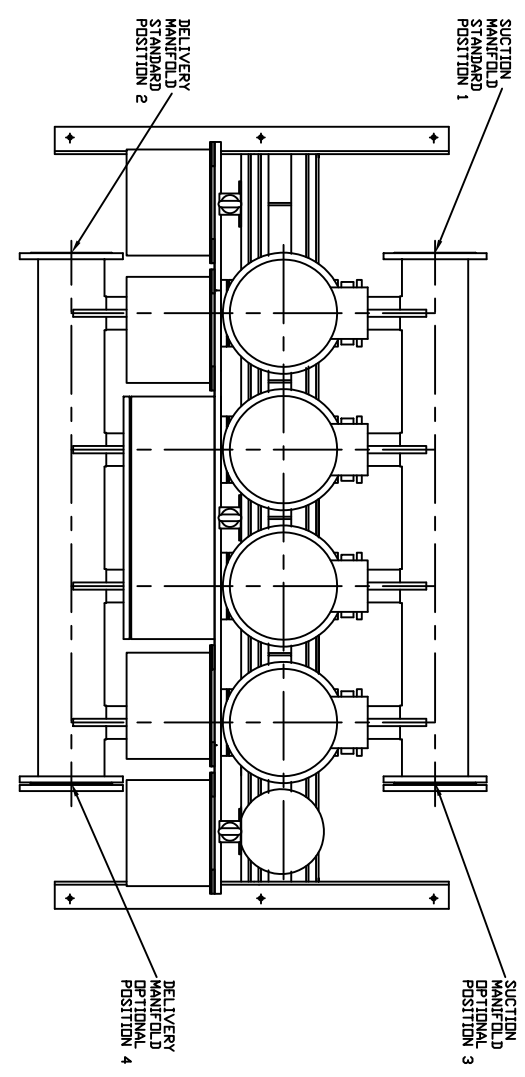


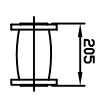
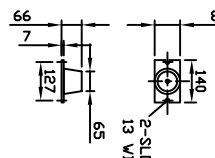
PUMP SIZE	MOTOR KW	FLC AMPS	PUMP WEIGHT KGS	SET WEIGHT KGS
6602/1E110T	110	200	148	1636
6602/1T	110	200	148	1636
6603/2E150T	150	270	184	1780
6603/2T	150	270	184	1780
6603/1E151T	185	331	202	1852
6603/1E151T	185	331	207	1852
6604/1E20T	220	389	213	1892
6604/1E20T	220	389	213	1892
6605/2E300T	300	340	237	2003

ALL FLANGES TO BS4504
 MAX WORKING PRESSURE 15BAR
 TEST PRESSURE 22.5BAR

UNCONTROLLED



ANTI-VIBRATION MOUNTING OPTION SUPPLIER WHEN ORDERED (6-PER SET K2092/10)



- NOTE -
- 1) MAIN POWER SUPPLY TO PANEL MUST BE SEPARATE TO CELL PUMP RUNNING AT SAME TIME
 - 2) LARGE STORAGE VESSELS IF ORDERED WILL BE SUPPLIED LOOSE FOR POSITIONING BY CLIENT AND MUST BE PROVIDED A CONNECTION FROM THE VESSEL TO THE DELIVERY PIPEWORK ADJACENT TO THE SET ISOLATING AND DRAIN VALVES SHOULD BE FITTED IN THIS CONNECTION

LAST MODIFICATION DETAILS

ISSUE	DATE	CHK	DRN	APP
-	-	-	-	-

JOB No.	PART No.	WEIGHT KG	FILE NAME
-	-	-	-

TITLE
 GENERAL ARRANGEMENT
 HYDROPAC IVSL4 SET
 66-PUMPS MODELS

DATE	DRN	APP
20/09/2005	BSD	PK

DRG No. PX10601

ARMSTRONG HOLDEN BROOKE PULLEN

VENLOCK WAY, MANCHESTER, M12 5JL
 TEL: +44 (0) 161 223 2223