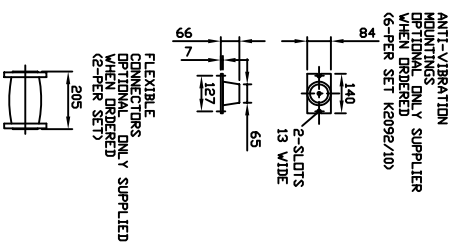
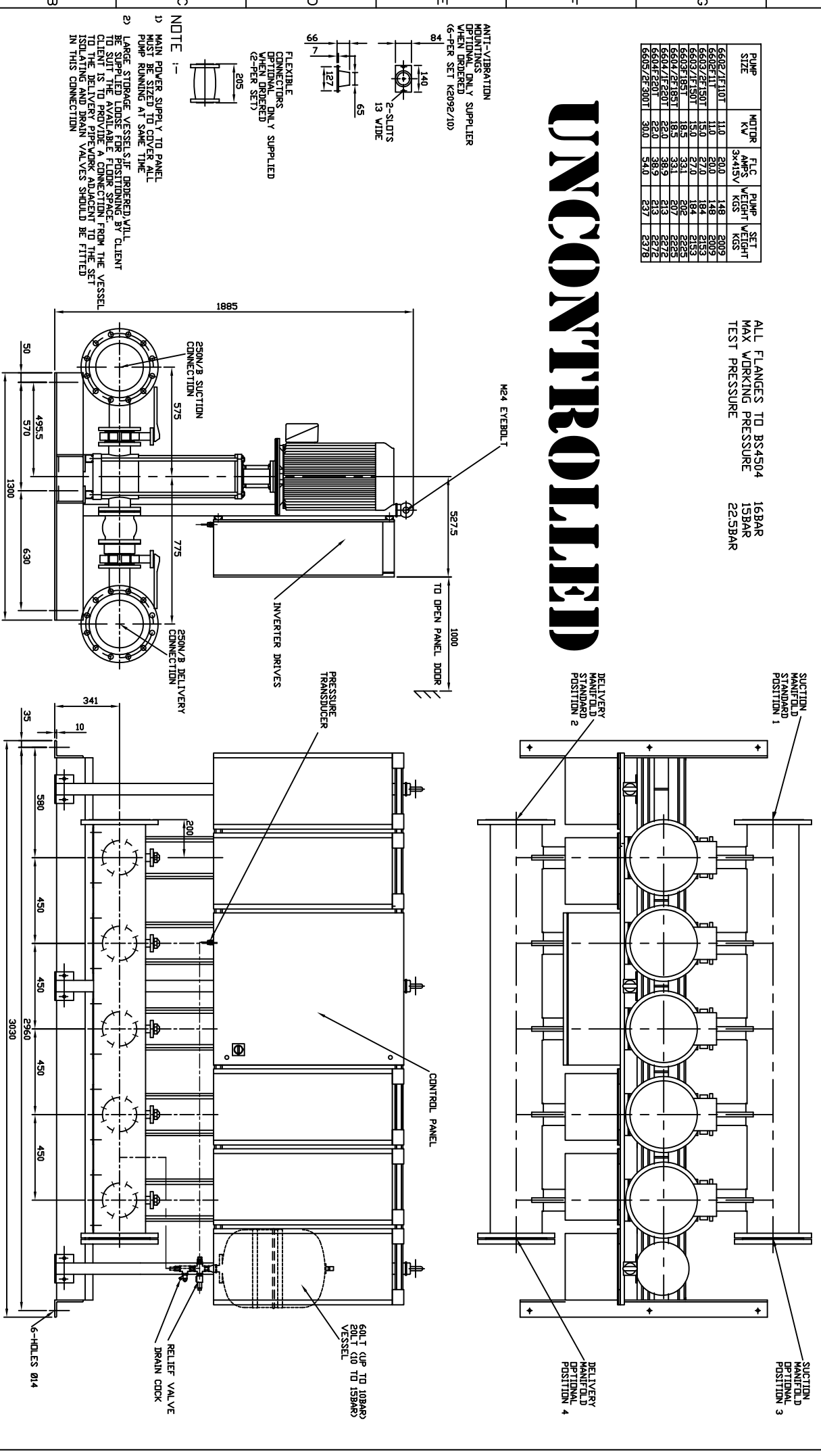


PUMP SIZE	MOTOR KW	F.L.C. AMPS 3x415V	PUMP WEIGHT KGS	SET WEIGHT KGS
6602/FE10T	11.0	20.0	148	2009
6602/FE11	11.0	20.0	148	2009
6603/FE150T	15.0	27.0	184	2153
6603/FE150T	15.0	27.0	184	2153
6603/FE15T	18.5	33.1	202	2225
6603/FE15T	18.5	33.1	202	2225
6604/FE185T	18.5	33.1	207	2225
6604/FE185T	18.5	33.1	207	2225
6604/FE20T	22.0	38.9	213	2272
6604/FE20T	22.0	38.9	213	2272
6602/FE300T	30.0	54.0	237	2373

ALL FLANGES TO BS4504  
 MAX WORKING PRESSURE 16BAR  
 TEST PRESSURE 22.5BAR

# UNCONTROLLED



LAST MODIFICATION DETAILS

ALL DIMENSIONS IN mm  
 DRAWN TO BS308  
 WELDING SYMBOLS TO BS499  
 SURFACE FINISH SHOWN IN MICROMETERS  
 MACHINE WHERE SHOWN TO TOLERANCE + 0.3MM UNLESS OTHERWISE STATED

ISSUE	DATE	DRN	APP
-	-	-	-

JOB No. - PART No. - WEIGHT KG - FILE NAME -  
 DESIGN No. - PATTERN No. - MATERIAL - MATL SPEC. -

TITLE  
 GENERAL ARRANGEMENT  
 HYDROPAK IVSLS SET  
 66-PUMPS MODELS

DRG No. PX10602

DATE 20/10/2005 DRN BSD  
 CHK BSD APP PK  
 SCALE 1:1 SHEET 1 OF 1

ARMSTRONG HOLDEN BROOKE PULLEN  
 VENLOCK WAY, MANCHESTER, M12 5JL  
 TEL: +44 (0) 161 223 2223