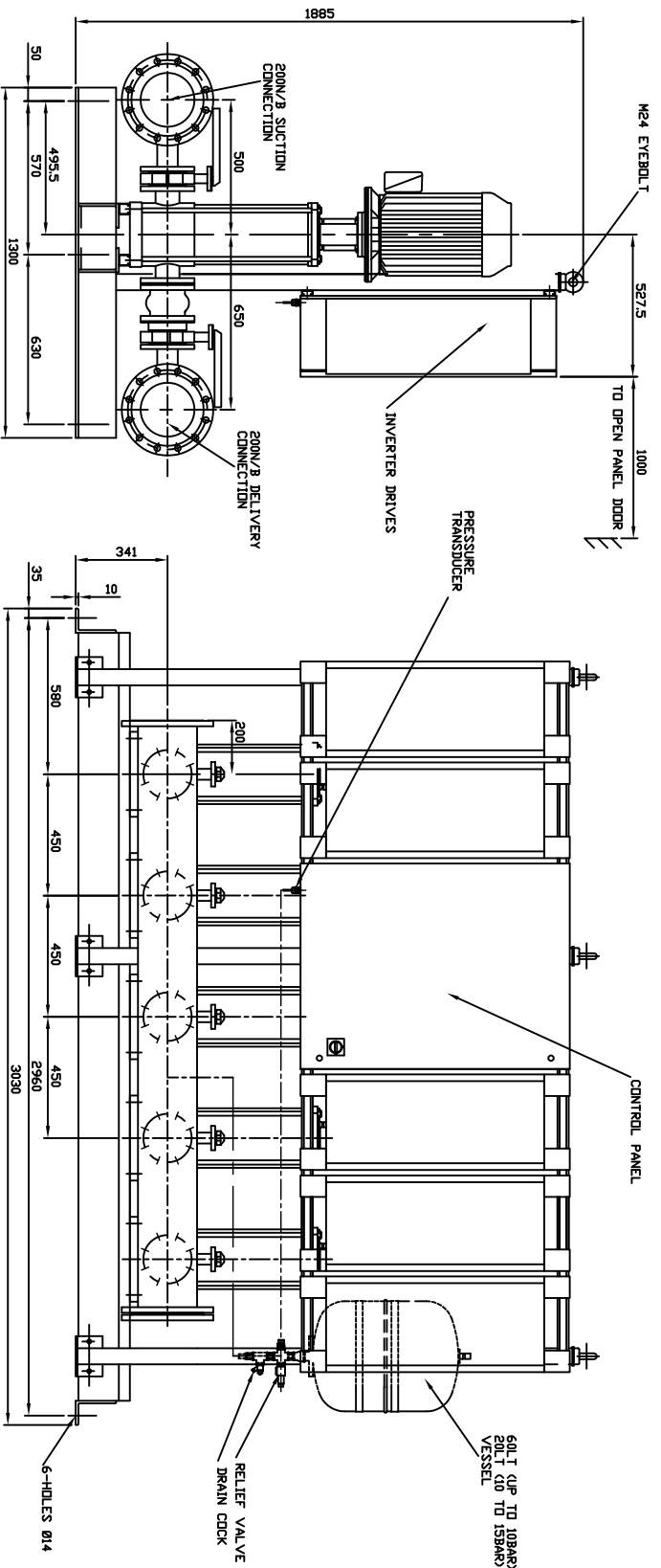
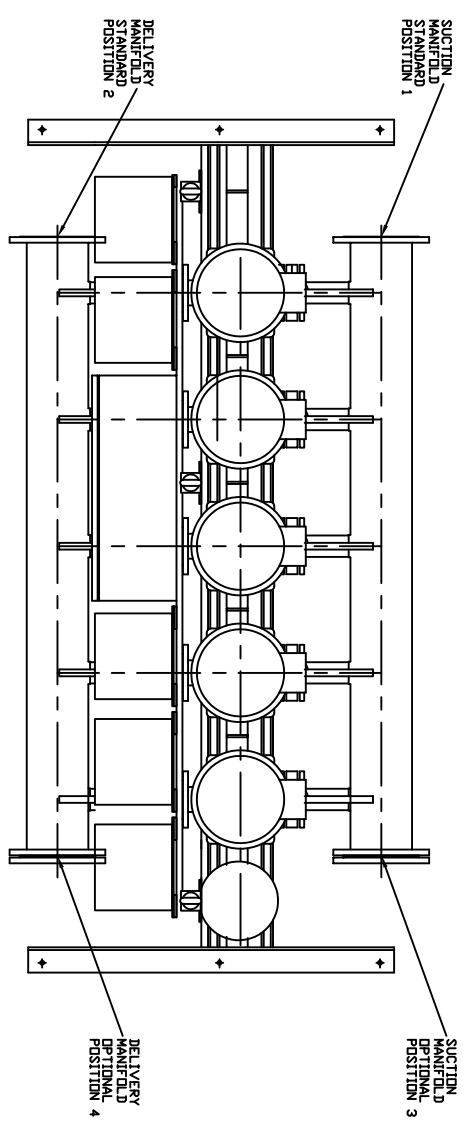


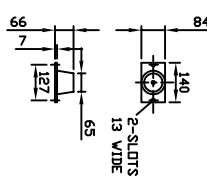
PUMP SIZE	MOTOR KW	FLC AMPS 3x115V	PUMP WEIGHT KGS	SET WEIGHT KGS
4609/2E110T	110	200	142	1892
4609/1T110T	110	200	142	1892
4604/1150T	150	271	176	1926
4604/50T	150	271	176	1926
4605/2E185T	185	331	198	2068
4605/185T	185	331	198	2068

ALL FLANGES TO BS4504
 MAX WORKING PRESSURE 16BAR
 TEST PRESSURE 22.5BAR

UNCONTROLLED



ANTI-VIBRATION MOUNTING OPTIONAL ONLY SUPPLIER WHEN ORDERED
 6-PER SET K2092/10



FLEXIBLE CONNECTORS OPTIONAL ONLY SUPPLIED WHEN ORDERED (2-PER SET)



- NOTE :-
- 1) MAIN POWER SUPPLY TO PANEL MUST BE SIZED TO COVER ALL PUMP RUNNING AT SAME TIME
 - 2) LARGE STORAGE VESSELS IF ORDERED WILL BE SUPPLIED LOOSE FOR POSITIONING BY CLIENT. CLIENT IS TO PROVIDE A CONNECTION FROM THE VESSEL TO SUIT THE AVAILABLE FLOOR SPACE. THE SET IS TO BE INSTALLED AND BRAIN VALVES SHOULD BE FITTED IN THIS CONNECTION

LAST MODIFICATION DETAILS

ISSUE	DATE	DRN	APP	ALL DIMENSIONS IN mm DRAWN TO BS308 WELDING SYMBOLS TO BS499 SURFACE FINISH SHOWN IN MICROMETERS MACHINE WHERE SHOWN TO TOLERANCE + 0.3MM UNLESS OTHERWISE STATED
—	—	—	—	

JOB No.	PART No.	WEIGHT KG	FILE NAME	TITLE
—	—	—	—	GENERAL ARRANGEMENT HYDROPAK IVSLS SET 46-PUMPS MODELS
DESIGN No.	PATTERN No.	MATERIAL	MATL SPEC.	
—	—	—	—	

THIS DRAWING IS THE PRIVATE AND CONFIDENTIAL PROPERTY OF ARMSTRONG HOLDEN BROOKE PULLEN LTD. ALL COPYRIGHT, MANUFACTURING AND SALES RIGHTS RESERVED.

DRG No.	PX10606
DATE	11/10/2005
CHK BSD	APP PK
SCALE	1:1
SHEET	1 OF 1

ARMSTRONG HOLDEN BROOKE PULLEN
 VENLOCK WAY, MANCHESTER, M12 5JL
 TEL: +44 (0) 161 223 2223