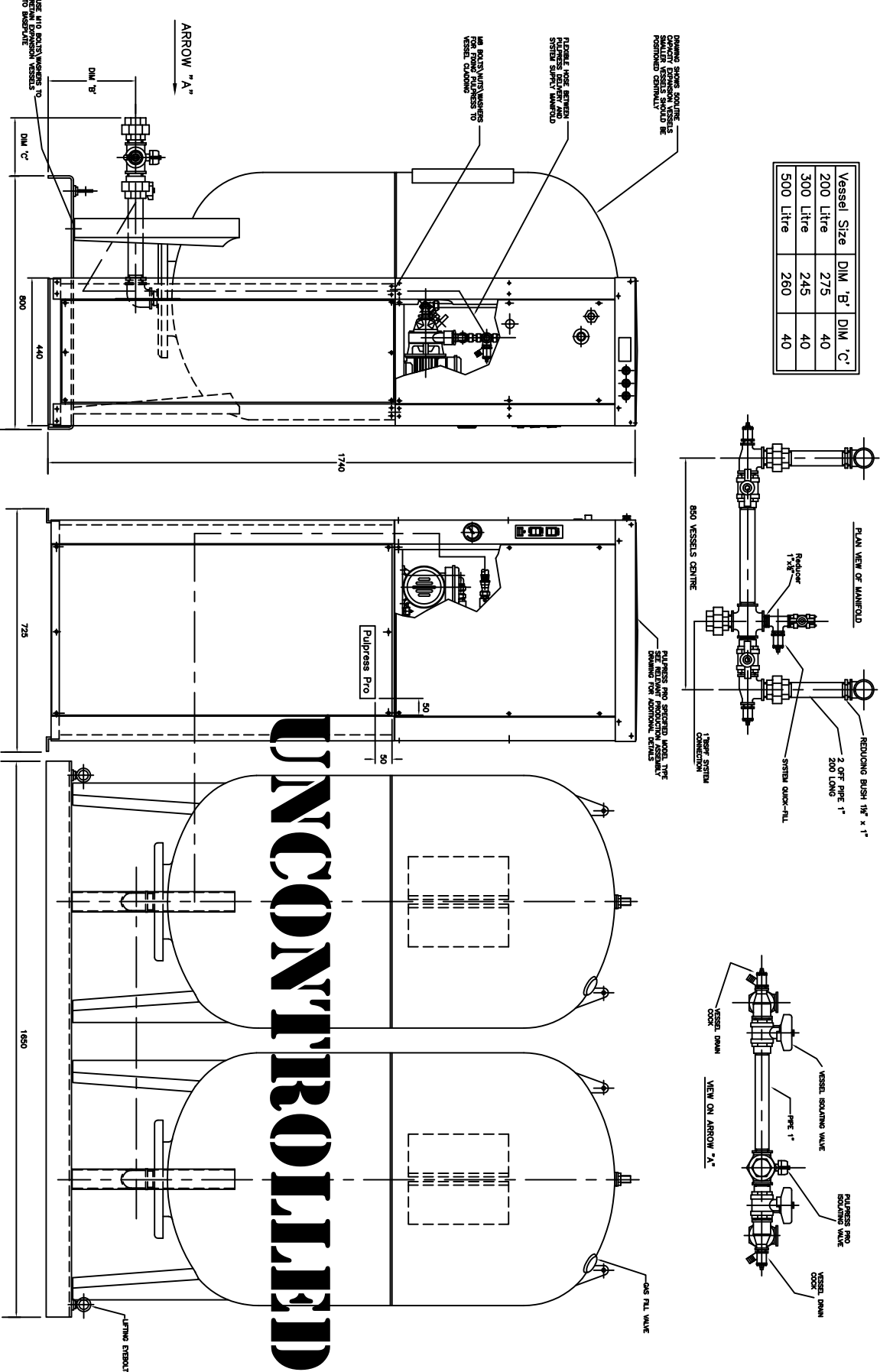


Vessel Size	DIM 'B'	DIM 'C'
200 Litre	275	40
300 Litre	245	40
500 Litre	260	40



NOTES: DIMENSIONS IN MILLIMETRES UNLESS OTHERWISE STATED  
 1. COMPLETED SYSTEM TO BE PRESSURE TESTED TO 140 PSIG.  
 2. PIPework TO BE ASSEMBLED USING PTFE TAPE AND PERMANOIL.

LAST MODIFICATION DETAILS  
 DRAWING BORDER CHANGED

ISSUE	DATE	BY	CHK	PUB
A	02/2006	DRN	PJB	APP

JOB No.	PART No.	WEIGHT KG	FILE NAME
-	-	-	13468A

DESIGN No.	PATTERN No.	MATERIAL	MAT'L SPEC.
-	-	-	-

TITLE  
 GENERAL ARRANGEMENT  
 PULPRESS PRO UNIT PACKAGED IN  
 CLADDING WITH 2 x 200-500 LITRE  
 REMOVABLE DIAPHRAGM VESSELS  
 BEDPLATE MOUNTED

DRG No.	DATE	CHK	SCALE
13468A	11/11/1997	DIA	NTS

ARMSTRONG HOLDEN BROOKE PULLEN  
 WENLOCK WAY, MANCHESTER, M12 5UL  
 TEL: +44 (0) 161 223 2223