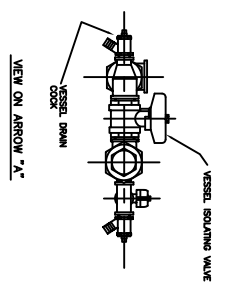
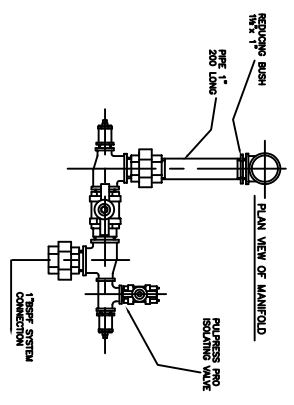
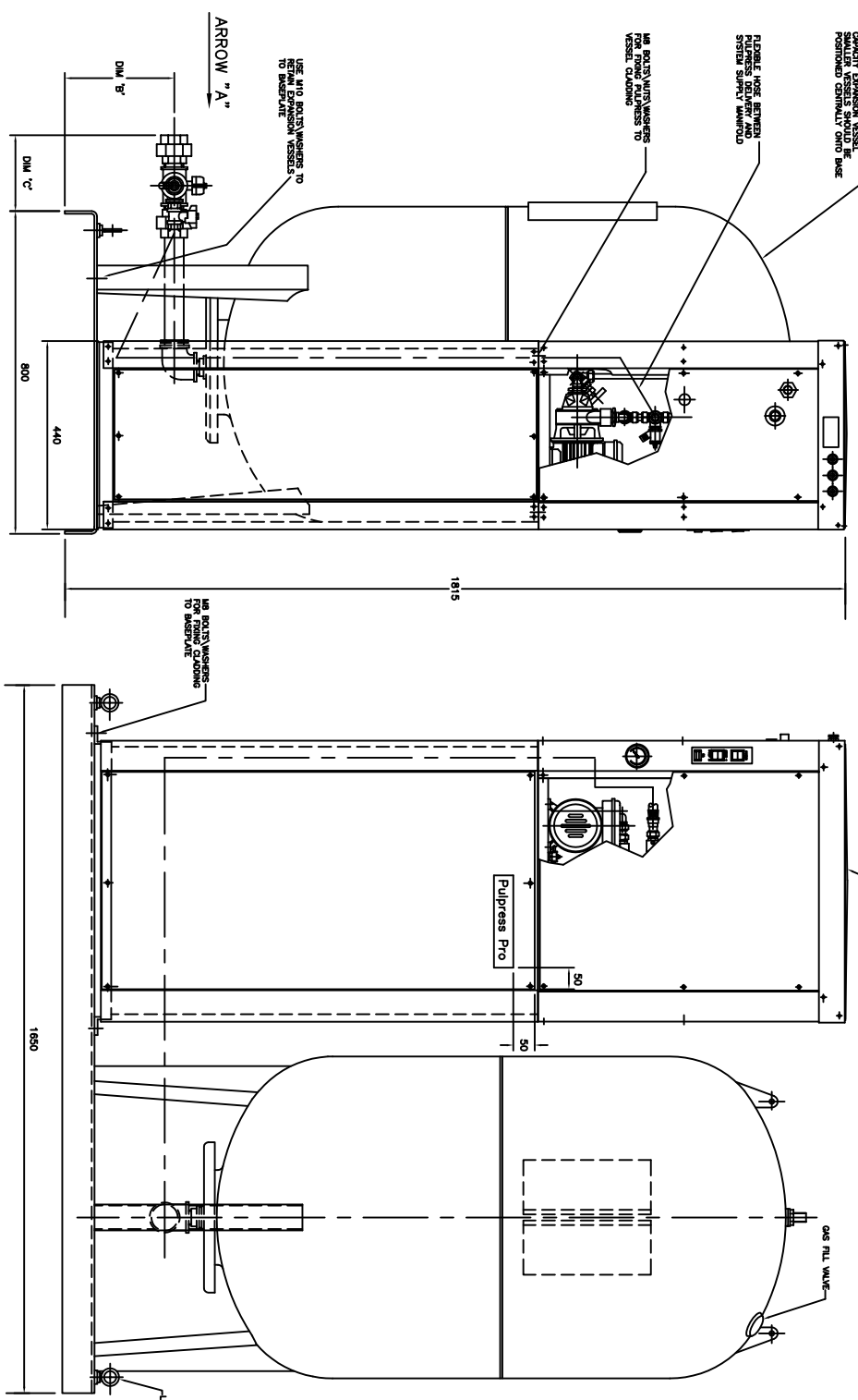


Vessel Size	DIM 'B'	DIM 'C'
200 Litre	275	40
300 Litre	245	40
500 Litre	260	40

UNCONTROLLED



NOTES: DIMENSIONS IN MILLIMETRES UNLESS OTHERWISE STATED
 1. COMPLETED SYSTEM TO BE PRESSURE TESTED TO 140 PSIG.
 2. PIPEWORK TO BE ASSEMBLED USING PTFE TAPE AND PERMANBOND.

LAST MODIFICATION DETAILS
 DRAWING BORDER CHANGED

ISSUE	DATE	BY	CHK	PUB
A	11/02/2006	DRN	PJB	APP

JOB No.	PART No.	WEIGHT KG	FILE NAME
-	-	-	13471A
DESIGN No.	PATTERN No.	MATERIAL	MAT'L SPEC.
-	-	-	-

TITLE
 GENERAL ARRANGEMENT
 PULPESSES PRO UNIT PACKAGED
 IN CLADDING WITH 200-500 LITRE
 REMOVABLE DIAPHRAGM VESSEL
 BEDPLATE MOUNTED

DATE	CHK	DRN	PDC
11/11/1997	DJA	EGJ	APP

SCALE: 1 OF 1

ARMSTRONG HOLDEN BROOKE PULLEN

WENLOCK WAY, MANCHESTER, M12 5JL
 TEL: +44 (0) 161 223 2223