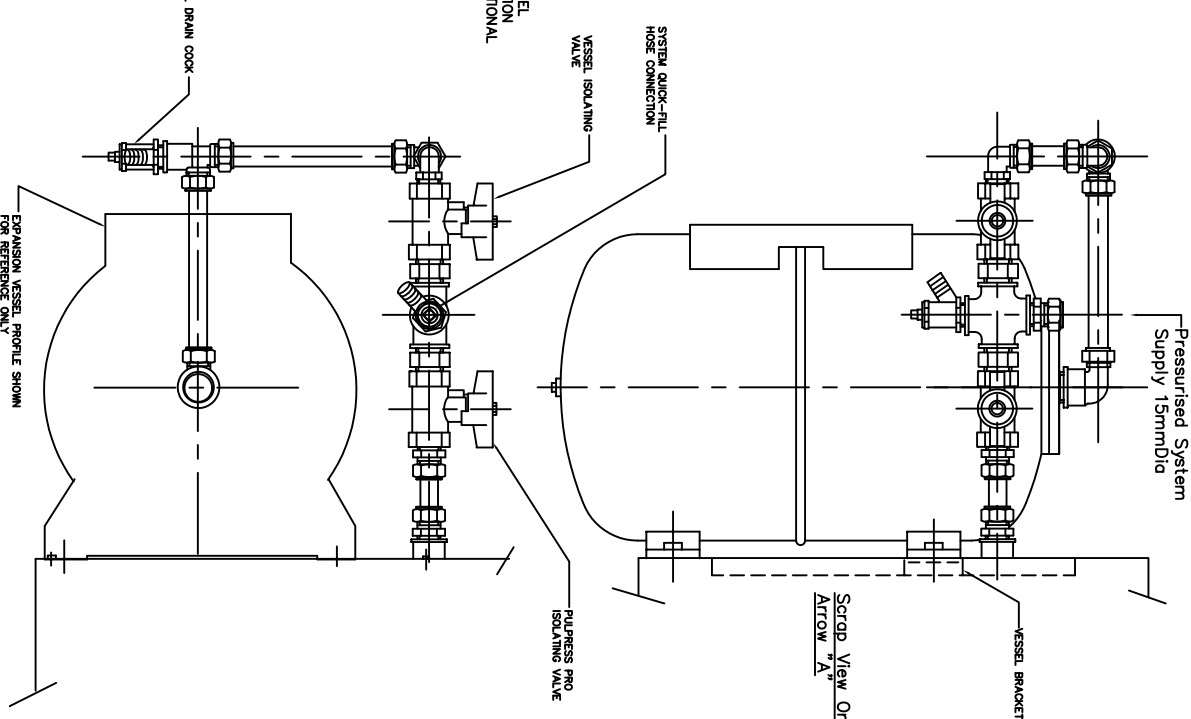
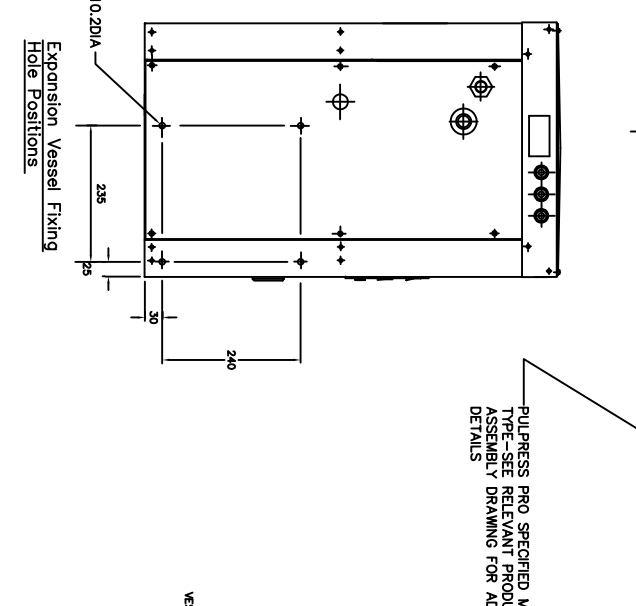
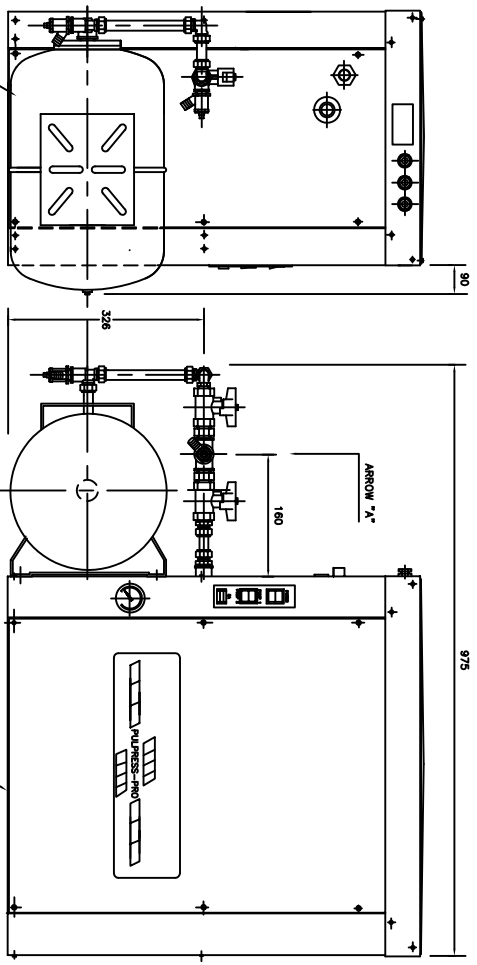


UNCONTROLLED



NOTES: DIMENSIONS IN MILLIMETRES UNLESS OTHERWISE STATED
 1. COMPLETED SYSTEM TO BE PRESSURE TESTED TO 60 PSIG.
 2. PERFORM TO BE ASSEMBLED USING PTFE TAPE AND PERMAWOUND.

LAST MODIFICATION DETAILS

ISSUE	DATE	BY	APP	CHK	PUB
A	02/2006	DRN	PJB	APP	PJB

DRAWING BORDER CHANGED

ALL DIMENSIONS IN mm
 DRAWN TO BS308
 WELDING SYMBOLS TO BS499
 SURFACE FINISH SHOWN IN
 MICROMETERS
 MACHINE WHERE SHOWN ✓
 TO TOLERANCE ± 0.3MM
 UNLESS OTHERWISE STATED

JOB No.	PART No.	WEIGHT KG	FILE NAME
-	-	-	13730A
DESIGN No.	PATTERN No.	MATERIAL	MAT'L SPEC.
-	-	-	-

THIS DRAWING IS THE PRIVATE AND CONFIDENTIAL PROPERTY OF ARMSTRONG HOLDEN BROOKE PULLEN LTD. ALL COPYRIGHT, MANUFACTURING AND SALES RIGHTS RESERVED.

TITLE
 GENERAL ARRANGEMENT
 PULPRESS PRO UNIT PACKAGED
 WITH 1 x 24 LITRE
 REMOVABLE DIAPHRAGM
 VESSEL

DRG No.	13730A
DATE	12/12/1997
CHK DUA	APP EGU
SCALE	NTS
SHEET	1 OF 1

ARMSTRONG HOLDEN BROOKE PULLEN

WENLOCK WAY, MANCHESTER, M12 5JL
 TEL: +44 (0) 161 223 2223