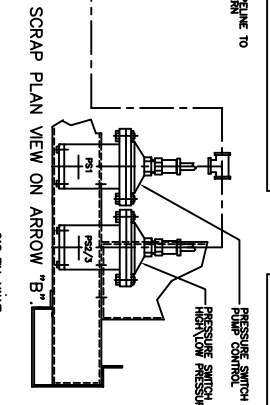
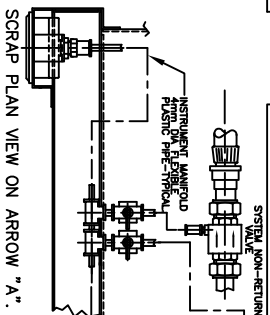
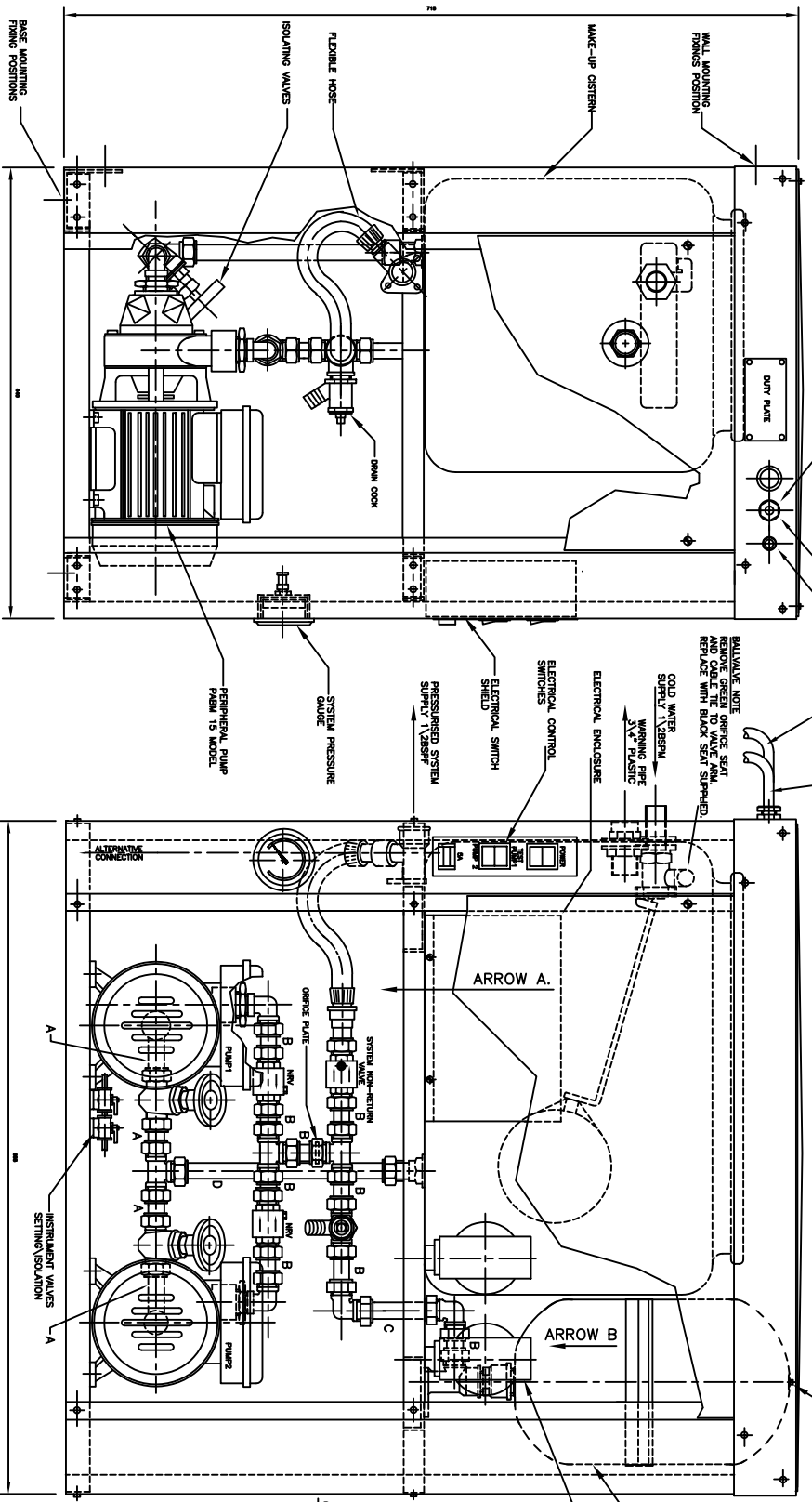


UNCONTROLLED



COPPER PIPEWORK 15mm

DIMENSIONS	QUANTITY
A=63	4
B=85	9
C=85	1
D=225	1

NOTES: DIMENSIONS IN MILLIMETRES UNLESS OTHERWISE STATED.
 1. COMPLETED SYSTEM TO BE PRESSURE TESTED TO 60 BARS.
 2. PIPEWORK TO BE ASSEMBLED USING PTFE TAPE AND FERMANAGON.
 LAST MODIFICATION DETAILS

ISSUE DATE: 02/2006 DRN: PJB	JOB No.	PART No.	WEIGHT KG	FILE NAME	TITLE	DRG No.	DATE: 08/05/2003 DRN: TJM	ARMSTRONG HOLDEN BROOKE PULLEN
CHK: PJB	APP: PJB	DESIGN No.	PATTERN No.	MATERIAL	MAT'L SPEC.	13083C	13083C	
						SCALE: NTS	SHEET: 1 OF 1	

ALL DIMENSIONS IN mm
 DRAWN TO BS308
 WELDING SYMBOLS TO BS499
 SURFACE FINISH SHOWN IN
 MICRO METERS
 MACHINERY WHERE SHOWN ✓
 TO TOLERANCE ± 0.3MM
 UNLESS OTHERWISE STATED

THIS DRAWING IS THE PRIVATE AND CONFIDENTIAL PROPERTY OF ARMSTRONG HOLDEN BROOKE PULLEN LTD. ALL COPYRIGHT, MANUFACTURING AND SALES RIGHTS RESERVED.

GENERAL ARRANGEMENT
 PULPRESS PRO STANDARD
 2 PUMP - 2.7 BAR
 SEPARATE GEAR

ARMSTRONG HOLDEN BROOKE PULLEN
 WENLOCK WAY, MANCHESTER, M12 5JL
 TEL: +44 (0) 161 223 2223