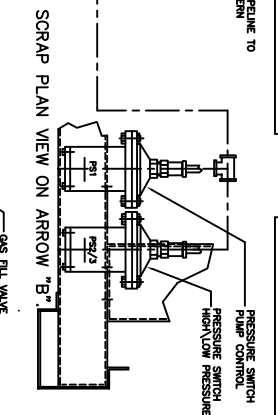
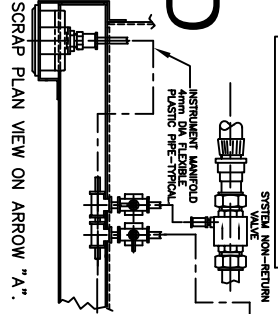
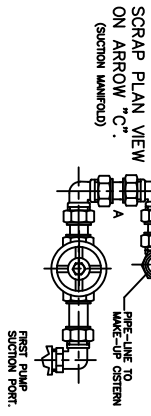
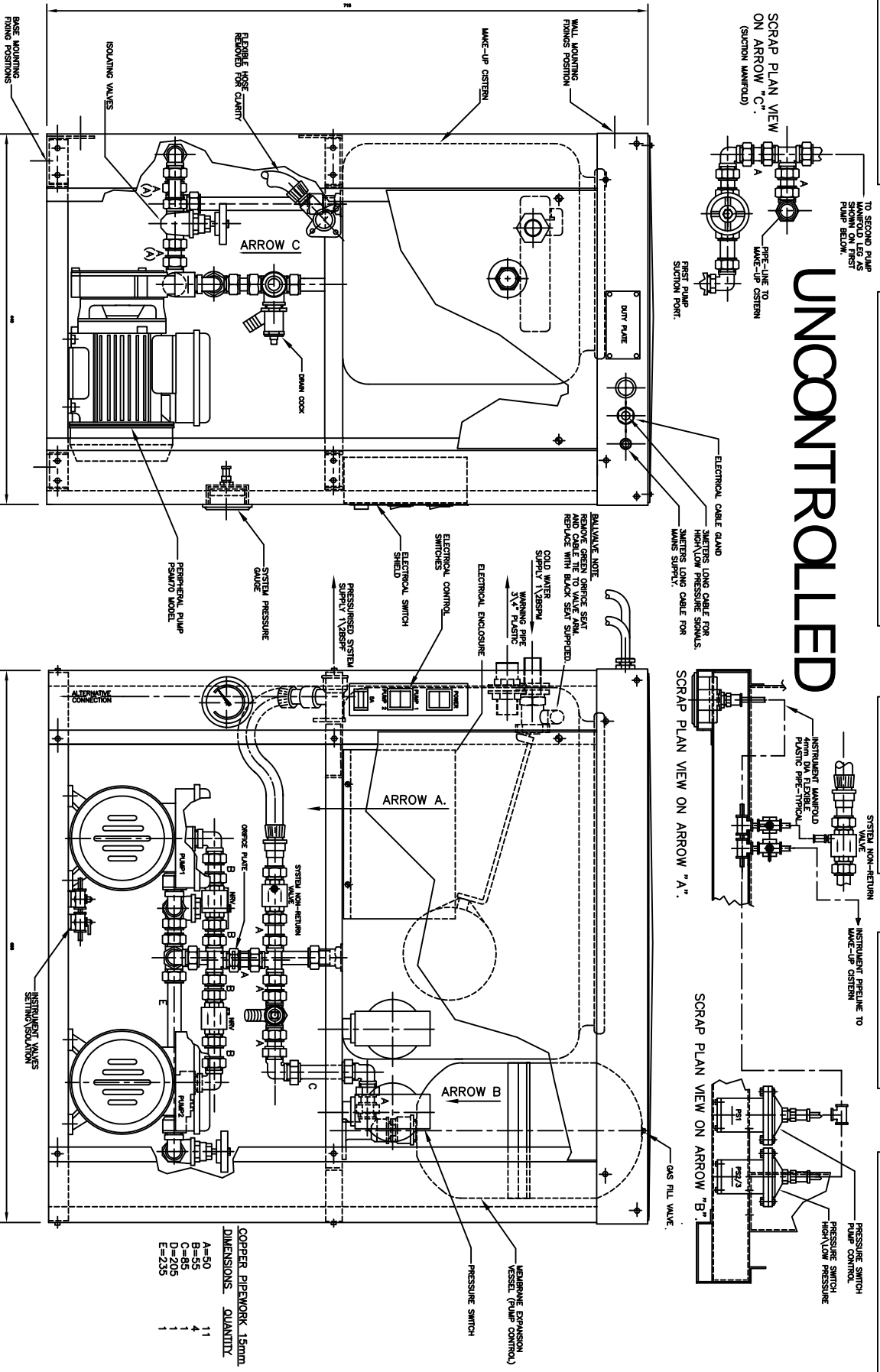


UNCONTROLLED



COPPER PIPERWORK 1.5mm DIMENSIONS QUANTITY

A=50	11
B=55	4
C=85	1
D=205	1
E=235	1

NOTES: DIMENSIONS IN MILLIMETRES UNLESS OTHERWISE STATED.
 1. COMPLETED SYSTEM TO BE PRESSURE TESTED TO 90 DRG.
 2. PREPWORK TO BE ASSEMBLED USING FITE TAPE AND PERMANBOND.

LAST MODIFICATION DETAILS		JOB No.	PART No.	WEIGHT KG	FILE NAME	TITLE		DRG No.	ARMSTRONG HOLDEN BROOKE PULLEN	
DRAWING BORDER CHANGED		-	-	-	13086C	GENERAL ARRANGEMENT PULPRESS PRO STANDARD 2 PUMP - 5.5 BAR SEPARATE GEAR		13086C	MENLOK WAY, MANCHESTER, M12 5JL	
ISSUE DATES/02/2006(DRN PUB)		DESIGN No.	PATTERN No.	MATERIAL	MAT'L SPEC.	DATE08/05/2003(DRN T.M)		CHK DUA	APP EGU	TEL: +44 (0) 161 223 2223
CHK PUB APP PUB		-	-	-	-	SCALE NTS		SHEET 1 OF 1		