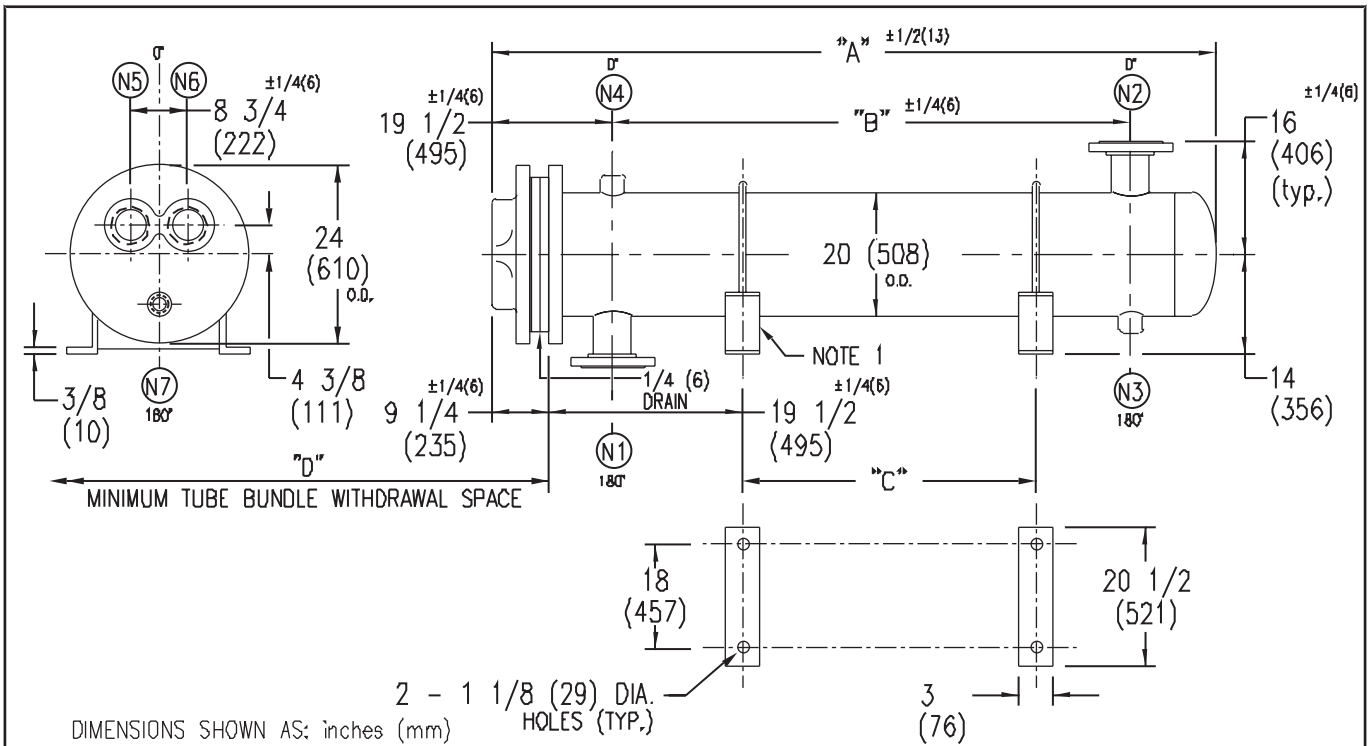


ARMSTRONG®



EXCHANGER SIZE *-BAFFLE SPACING	DIMENSIONS											
	A		B		C		D		(N1)		(N2)	
	inches	mm	inches	mm	inches	mm	inches	mm	inches	mm	inches	mm
WX-204-4*-1	59 1/4	1505	28 1/4	718	11 1/2	292	53	1346	10	254	10	254
WX-205-4*-1	71 1/4	1810	40 1/4	1022	23 1/2	597	65	1651	10	254	10	254
WX-206-4*-1	83 1/4	2115	52 1/4	1327	35 1/2	902	77	1956	10	254	10	254
WX-207-4*-1	95 1/4	2419	64 1/4	1632	47 1/2	1207	89	2261	10	254	10	254
WX-208-4*-1	107 1/4	2724	76 1/4	1937	59 1/2	1511	101	2565	10	254	10	254
WX-209-4*-1	119 1/4	3029	88 1/4	2242	71 1/2	1816	113	2870	10	254	10	254
WX-2010-4*-1	131 1/4	3334	100 1/4	2546	83 1/2	2121	125	3175	10	254	10	254
WX-2011-4*-1	143 1/4	3639	112 1/4	2851	95 1/2	2426	137	3480	10	254	10	254
WX-2012-4*-1	155 1/4	3943	124 1/4	3156	107 1/2	2731	149	3785	10	254	10	254
WX-2013-4*-1	167 1/4	4248	136 1/4	3461	119 1/2	3035	161	4089	10	254	10	254
WX-2014-4*-1	179 1/4	4553	148 1/4	3766	131 1/2	3340	173	4394	10	254	10	254
WX-2015-4*-1	191 1/4	4858	160 1/4	4070	143 1/2	3645	185	4699	10	254	10	254

NOZZLE SCHEDULE				
SERVICE	MARK	SHELL SIDE	MARK	TUBE SIDE
INLET	(N1)	AS PER TABLE	(N5)	6 (152) NPT
OUTLET	(N2)	AS PER TABLE	(N6)	6 (152) NPT
DRAIN	(N3)	1/2 (13) NPT	(N7)	1/2 (13) NPT
VENT	(N4)	3/4 (19) NPT		

NOTES: 1. SUPPORTS SUPPLIED ONLY IF SPECIFIED ON ORDER.
 2. NOZZLE SIZES SHOWN ARE RECOMMENDED FOR MAX. EXCHANGER LIFE, NO EXTERNAL FORCES APPLY.
 3. FABRICATED TO ASME CODE SECTION VIII DIVISION 1 AND LATEST ADDENDA.
 4. DRAWING IS NOT TO SCALE.
 5. ALL DIMN'S ±1/8 (3) UNLESS OTHERWISE SHOWN.

DESIGN CONDITIONS				
	SHELL		TUBES	
DESIGN PRESSURE	150 PSIG	1034 KPa	125 PSIG	862 KPa
DESIGN TEMPERATURE	375 °F	191 °C	375 °F	191 °C
MIN. DESIGN METAL TEMP.	40 °F	4.4 °C	40 °F	4.4 °C
HYDRO. TEST PRESSURE	225 PSIG	1551 KPa	250 PSIG	1723 KPa
CONTENTS	WATER		WATER	

CUSTOMER:
 LOCATION:
 ENGINEER:
 ORDER No.:
 PROJECT/JOB:
 LOCATION:
 TAG: (QUOTE #)

TITLE G.A. 150 LB. WX SERIES HEAT EXCHANGERS	A R M S T R O N G				NUMBER WX-20-4P-1(10)	REV. A 2001 J.R.
DATE: 12 / 01 / 94 BY: D.C.R.	TORONTO - CANADA TEL : (416) 755-2291	MONTREAL - CANADA TEL : (514) 421-2424	BUFFALO - N. Y. TEL: (716) 893-8813	COLCHESTER - U.K. TEL: (44) 120-657-9491		