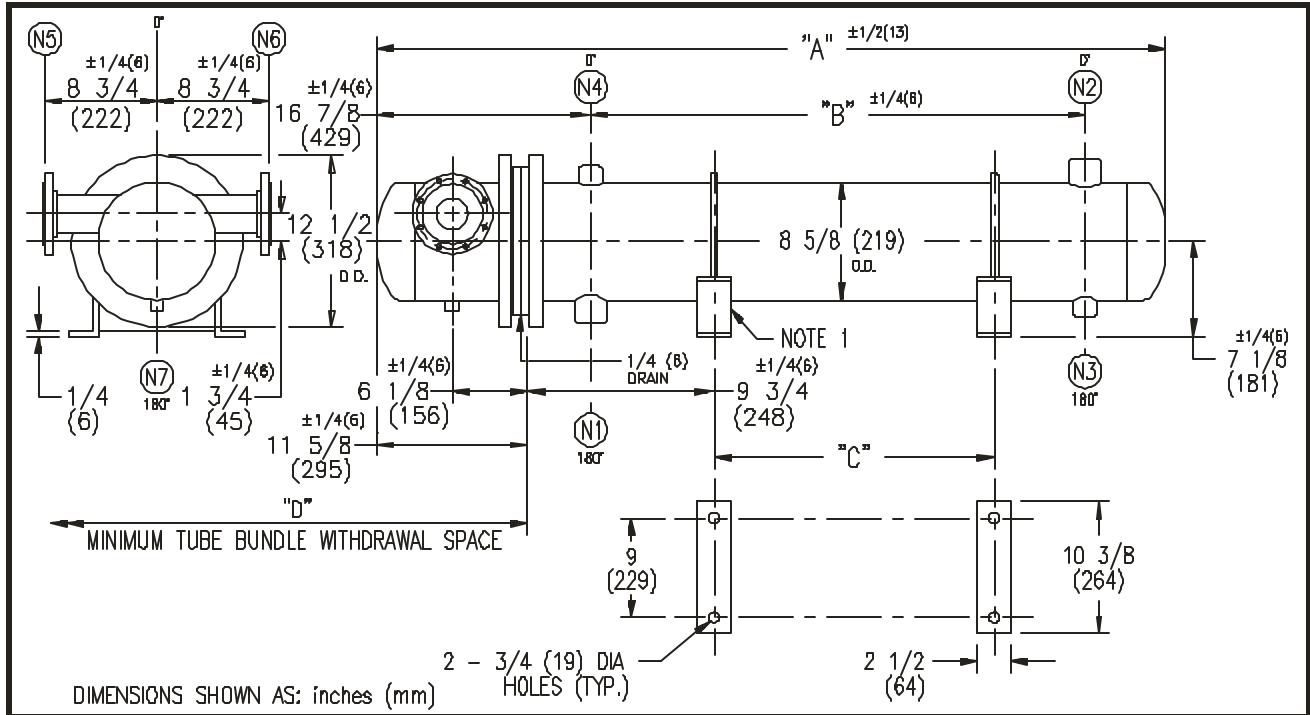


# ARMSTRONG®



DIMENSIONS SHOWN AS: inches (mm)

EXCHANGER SIZE * BAFFLE SPACING	DIMENSIONS											
	A		B		C		D		N1		N2	
	inches	mm	inches	mm	inches	mm	inches	mm	inches	mm	inches	mm
WX-82-4*-4	37 3/8	949	14 1/2	368	6	152	27	686	3	76	3	76
WX-83-4*-4	49 3/8	1254	26 1/2	673	18	457	39	991	3	76	3	76
WX-84-4*-4	61 3/8	1559	38 1/2	978	30	762	51	1295	3	76	3	76
WX-85-4*-4	73 3/8	1864	50 1/2	1283	42	1067	63	1600	3	76	3	76
WX-86-4*-4	85 3/8	2169	62 1/2	1588	54	1372	75	1905	3	76	3	76
WX-87-4*-4	97 3/8	2473	74 1/2	1892	66	1676	87	2210	3	76	3	76
WX-88-4*-4	109 3/8	2778	86 1/2	2197	78	1981	99	2515	3	76	3	76
WX-89-4*-4	121 3/8	3083	98 1/2	2502	90	2286	111	2819	3	76	3	76
WX-810-4*-4	133 3/8	3388	110 1/2	2807	102	2591	123	3124	3	76	3	76
WX-811-4*-4	145 3/8	3693	122 1/2	3112	114	2896	135	3429	3	76	3	76
WX-812-4*-4	157 3/8	3997	134 1/2	3416	126	3200	147	3734	3	76	3	76
WX-813-4*-4	169 3/8	4302	146 1/2	3721	138	3505	159	4039	3	76	3	76
WX-814-4*-4	181 3/8	4607	158 1/2	4026	150	3810	171	4343	3	76	3	76

NOZZLE SCHEDULE				
SERVICE	MARK	SHELL SIDE	MARK	TUBE SIDE
INLET	N1	AS PER TABLE	N5	2 (51) FLG
OUTLET	N2	AS PER TABLE	N6	2 (51) FLG
DRAIN	N3	1/2 (13) NPT	N7	1/2 (13) NPT
VENT	N4	3/4 (19) NPT		

NOTES: 1. SUPPORTS SUPPLIED ONLY IF SPECIFIED ON ORDER  
 2. NOZZLE SIZES SHOWN ARE RECOMMENDED FOR MAX. EXCHANGER LIFE, NO EXTERNAL FORCES APPLY.  
 3. FABRICATED TO ASME CODE SECTION VIII DIVISION 1 AND LATEST ADDENDA.  
 4. DRAWING IS NOT TO SCALE  
 5. ALL DIMN'S ±1/8 (3) UNLESS OTHERWISE SHOWN.

DESIGN CONDITIONS				
	SHELL		TUBES	
DESIGN PRESSURE	150 PSIG	1034 KPa	150 PSIG	1034 KPa
DESIGN TEMPERATURE	375 °F	191 °C	375 °F	191 °C
MIN. DESIGN METAL TEMP	35 °F	1.7 °C	35 °F	1.7 °C
HYDRO. TEST PRESSURE	225 PSIG	1551 KPa	225 PSIG	1551 KPa
CONTENTS	WATER		WATER	

CUSTOMER:  
 LOCATION:  
 ENGINEER:  
 ORDER No.:  
 PROJECT/JOB:  
 LOCATION:  
 TAG: (QUOTE # )

TITLE G A 150 LB. WX SERIES HEAT EXCHANGERS	A R M S T R O N G				NUMBER WX-8-4P-4(3)	REV.
DATE: 12/01/94 BY DCR	TORONTO - CANADA TEL: (416) 755-2291	MONTREAL - CANADA TEL: (514) 421-2424	BUFFALO - N. Y. TEL: (716) 683-8813	COLCHESTER - U.K. TEL: (44) 120-657-9481		