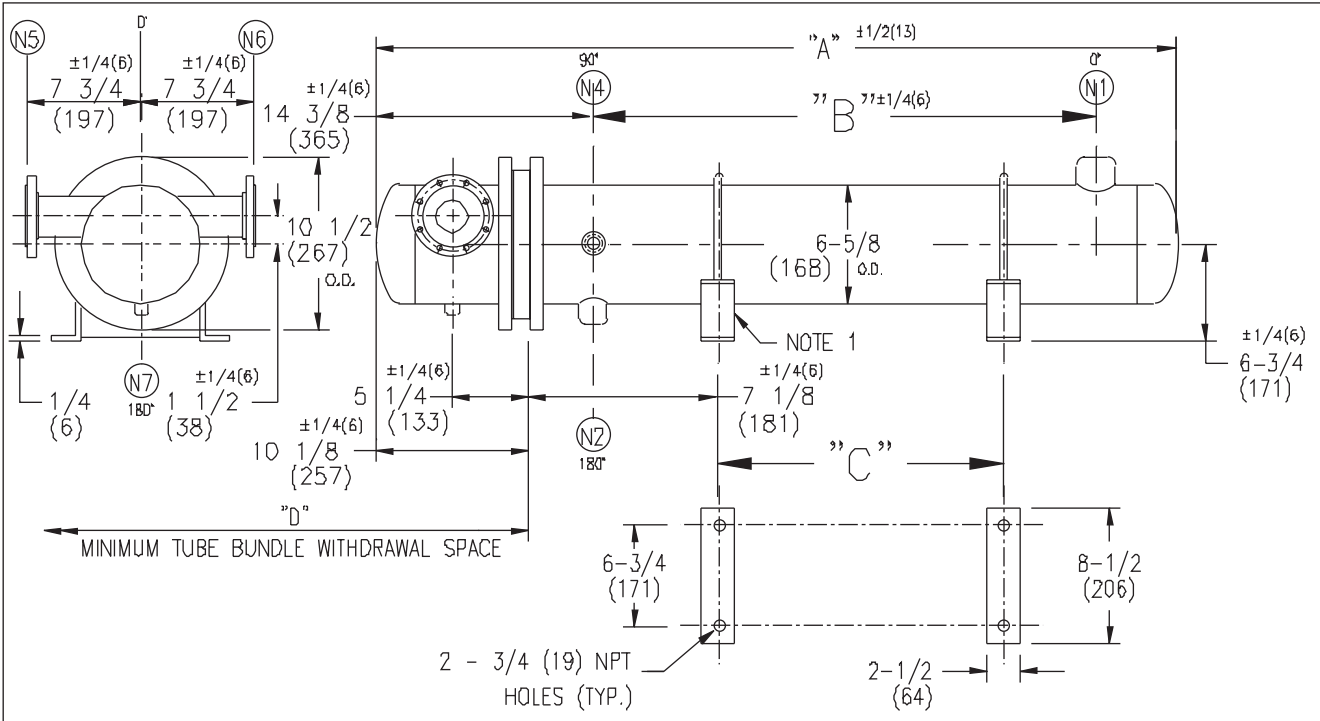


ARMSTRONG®



EXCHANGER SIZE *BAFFLE SPACING	DIMENSIONS											
	A		B		C		D		(N1)		(N2)	
	inches	mm	inches	mm	inches	mm	inches	mm	inches	mm	inches	mm
WS3H-62-4*-E4	43 5/8	1108	22 3/4	578	12 1/8	308	26	660	1-1/2	38	1	25
WS3H-63-4*-E4	55 5/8	1413	34 3/4	883	24 1/8	613	38	965	2	51	1	25
WS3H-64-4*-E4	67 5/8	1718	46 3/4	1187	36 1/8	918	50	1270	2-1/2	64	1	25
WS3H-65-4*-E4	79 5/8	2022	58 3/4	1492	48 1/8	1222	62	1574	2-1/2	64	1	25
WS3H-66-4*-E4	91 5/8	2327	70 3/4	1797	60 1/8	1527	74	1879	3	76	1	25
WS3H-67-4*-E4	103 5/8	2632	82 3/4	2102	72 1/8	1832	86	2184	3	76	1	25
WS3H-68-4*-E4	115 5/8	2937	94 3/4	2407	84 1/8	2137	98	2489	3	76	1	25

NOZZLE SCHEDULE				
SERVICE	MARK	SHELL SIDE	MARK	TUBE SIDE
INLET	(N1)	AS PER TABLE	(N5)	2 (51) 300# FLG.
OUTLET	(N2)	AS PER TABLE	(N6)	2 (51) 300# FLG.
DRAIN			(N7)	1/2 (13) NPT
VENT	(N4)	3/4 (19) NPT		

NOTES: 1. SUPPORTS SUPPLIED ONLY IF SPECIFIED ON ORDER.
 2. NOZZLE SIZES SHOWN ARE RECOMMENDED FOR MAX. EXCHANGER LIFE, NO EXTERNAL FORCES APPLY.
 3. FABRICATED TO ASME CODE SECTION VIII DIVISION 1 AND LATEST ADDENDA.
 4. DRAWING IS NOT TO SCALE.
 5. ALL DIMN'S $\pm 1/8$ (3) UNLESS OTHERWISE SHOWN.

DESIGN CONDITIONS				
	SHELL		TUBES	
DESIGN PRESSURE	300 PSIG	2068 KPa	300 PSIG	2068 KPa
DESIGN TEMPERATURE	375 °F	191 °C	375 °F	191 °C
MIN. DESIGN METAL TEMP.	35 °F	1.7 °C	35 °F	1.7 °C
HYDRO. TEST PRESSURE	450 PSIG	3102 KPa	450 PSIG	3102 KPa
CONTENTS	STEAM		WATER	

CUSTOMER: _____
 LOCATION: _____
 ENGINEER: _____
 ORDER No.: _____
 PROJECT/JOB: _____
 LOCATION: _____
 TAG: _____ (QUOTE # _____)

TITLE G.A. 300 LB. WS SERIES HEAT EXCHANGERS	A R M S T R O N G				NUMBER WS3H-6-4P-E4(3)	REV.
DATE: 12 / 11 / 00 BY: J.R.	TORONTO - CANADA TEL: (416) 755-2291	MONTREAL - CANADA TEL: (514) 421-2424	BUFFALO - N. Y. TEL: (716) 683-8813	COLCHESTER - U.K. TEL: (44) 120-657-9491		