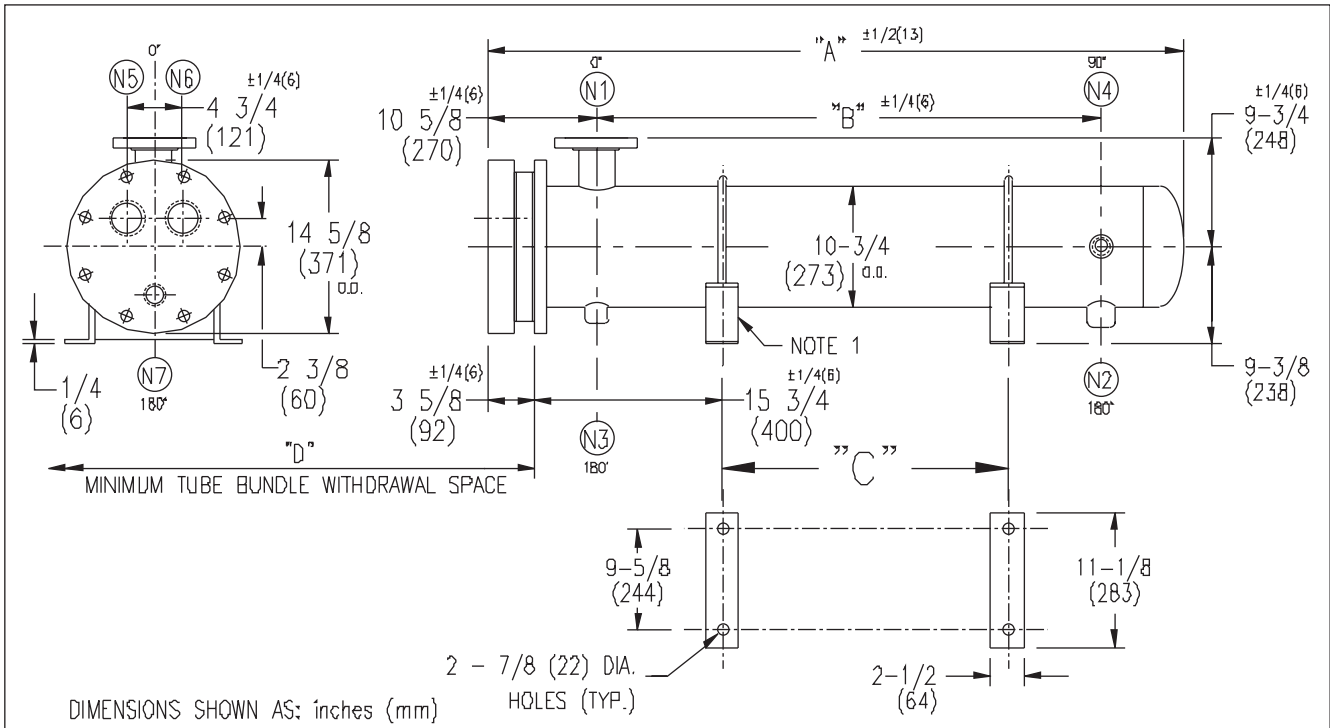


# ARMSTRONG®



DIMENSIONS SHOWN AS: inches (mm)

EXCHANGER SIZE *-BAFFLE SPACING	DIMENSIONS											
	A		B		C		D		N1		N2	
	inches	mm	inches	mm	inches	mm	inches	mm	inches	mm	inches	mm
WS3T-102-4*-3	28 7/8	733	12 1/4	311	-	-	26	660	4	102	1 1/2	38
WS3T-103-4*-3	40 7/8	1038	24 1/4	616	12 1/4	311	38	965	4	102	1 1/2	38
WS3T-104-4*-3	52 7/8	1343	36 1/4	921	24 1/4	616	50	1270	6	152	2	51
WS3T-105-4*-3	64 7/8	1648	48 1/4	1226	36 1/4	921	62	1574	6	152	2	51
WS3T-106-4*-3	76 7/8	1953	60 1/4	1530	48 1/4	1226	74	1879	6	152	2	51
WS3T-107-4*-3	88 7/8	2257	72 1/4	1835	60 1/4	1530	86	2184	6	152	2	51
WS3T-108-4*-3	100 7/8	2562	84 1/4	2140	72 1/4	1835	98	2489	6	152	2	51
WS3T-109-4*-3	112 7/8	2867	96 1/4	2445	84 1/4	2140	110	2794	6	152	2	51
WS3T-1010-4*-3	124 7/8	3172	108 1/4	2750	96 1/4	2445	122	3098	6	152	2	51
WS3T-1011-4*-3	136 7/8	3477	120 1/4	3054	108 1/4	2750	134	3403	6	152	2	51
WS3T-1012-4*-3	148 7/8	3781	132 1/4	3359	120 1/4	3054	146	3708	6	152	2	51
WS3T-1013-4*-3	160 7/8	4086	144 1/4	3664	132 1/4	3359	158	4013	6	152	2	51
WS3T-1014-4*-3	172 7/8	4391	156 1/4	3969	144 1/4	3664	170	4318	6	152	2	51
WS3T-1015-4*-3	184 7/8	4696	168 1/4	4274	156 1/4	3969	182	4623	6	152	2	51

NOZZLE SCHEDULE				
SERVICE	MARK	SHELL SIDE	MARK	TUBE SIDE
INLET	N1	AS PER TABLE	N5	3 (76) NPT
OUTLET	N2	AS PER TABLE	N6	3 (76) NPT
DRAIN	N3	1/2 (13) NPT	N7	1/2 (13) NPT
VENT	N4	3/4 (19) NPT		

NOTES: 1. SUPPORTS SUPPLIED ONLY IF SPECIFIED ON ORDER.  
 2. NOZZLE SIZES SHOWN ARE RECOMMENDED FOR MAX. EXCHANGER LIFE, NO EXTERNAL FORCES APPLY.  
 3. FABRICATED TO ASME CODE SECTION VIII DIVISION 1 AND LATEST ADDENDA.  
 4. DRAWING IS NOT TO SCALE.  
 5. ALL DIM'S  $\pm 1/8$  (3) UNLESS OTHERWISE SHOWN.

DESIGN CONDITIONS				
	SHELL		TUBES	
DESIGN PRESSURE	150 PSIG	1034 KPa	300 PSIG	2068 KPa
DESIGN TEMPERATURE	375 °F	191 °C	375 °F	191 °C
MIN. DESIGN METAL TEMP.	35 °F	1.7 °C	35 °F	1.7 °C
HYDRO. TEST PRESSURE	225 PSIG	1551 KPa	450 PSIG	3102 KPa
CONTENTS	STEAM		WATER	

CUSTOMER:  
 LOCATION:  
 ENGINEER:  
 ORDER No.,  
 PROJECT/JOB:  
 LOCATION:  
 TAG: (QUOTE # )

TITLE	A R M S T R O N G				NUMBER	REV.
G.A. 300 LB. WS SERIES HEAT EXCHANGERS	TORONTO - CANADA	MONTREAL - CANADA	BUFFALO - N. Y.	COLCHESTER - U.K.	WS3T-10-4P-3	
DATE: 02 / 28 / 01 BY: J.R.	TEL: (416) 755-2291	TEL: (514) 421-2424	TEL: (716) 693-8813	TEL: (44) 129-657-9491		