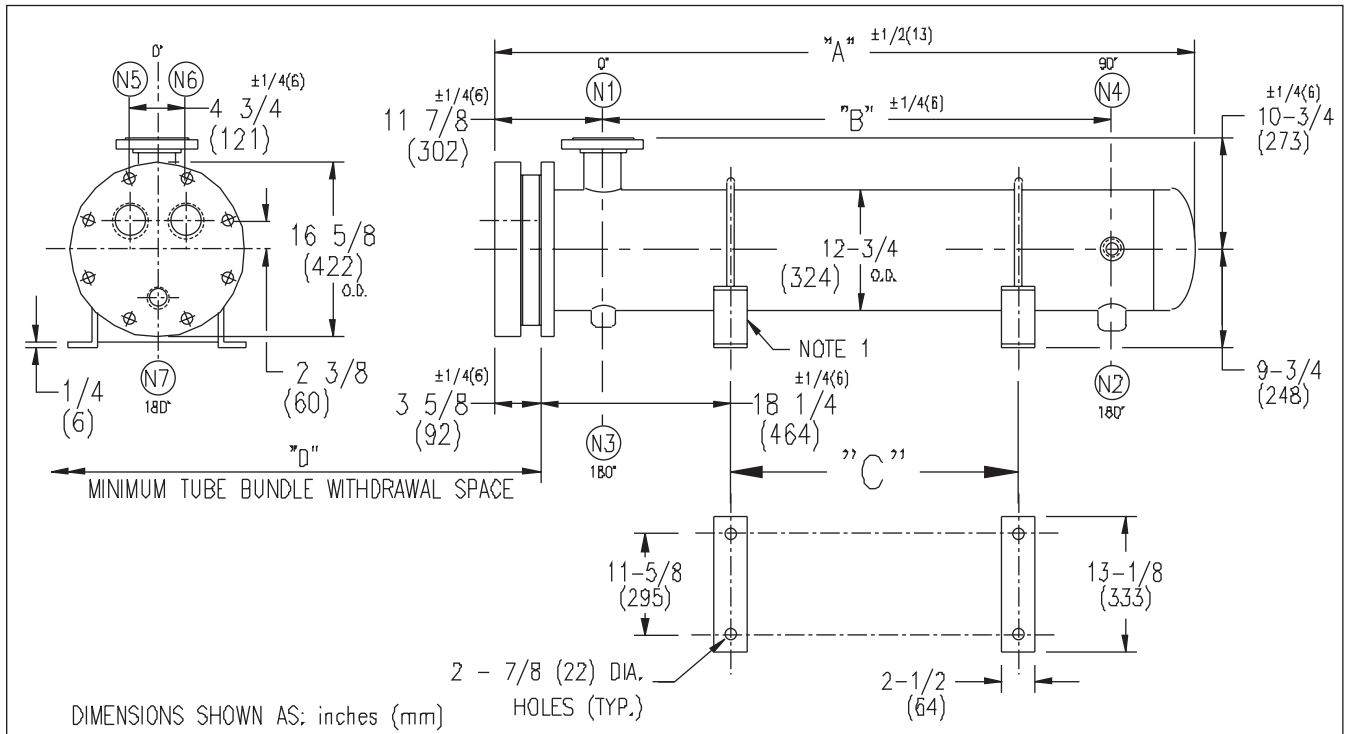


ARMSTRONG®



DIMENSIONS SHOWN AS: inches (mm)

HOLES (TYP.)

EXCHANGER SIZE *—BAFFLE SPACING	DIMENSIONS												
	A		C		D		N1		N2				
	inches	mm	inches	mm	inches	mm	inches	mm	inches	mm			
WS3T-123-4*-3	40	7/8	1/4	870	8	3/4	222	38	965	6	152	2	51
WS3T-124-4*-3	52	7/8	1/4	1175	20	3/4	527	50	1270	6	152	2	51
WS3T-125-4*-3	64	7/8	1/4	1480	32	3/4	832	62	1574	6	152	2	51
WS3T-126-4*-3	76	7/8	1/4	1784	44	3/4	1137	74	1879	6	152	2	51
WS3T-127-4*-3	88	7/8	1/4	2089	56	3/4	1441	86	2184	8	203	2 1/2	64
WS3T-128-4*-3	100	7/8	1/4	2394	68	3/4	1746	98	2489	8	203	2 1/2	64
WS3T-129-4*-3	112	7/8	1/4	2699	80	3/4	2051	110	2794	8	203	2 1/2	64
WS3T-1210-4*-3	124	7/8	1/4	3004	92	3/4	2356	122	3098	8	203	2 1/2	64
WS3T-1211-4*-3	136	7/8	1/4	3308	104	3/4	2661	134	3403	8	203	2 1/2	64
WS3T-1212-4*-3	148	7/8	1/4	3613	116	3/4	2965	146	3708	8	203	2 1/2	64
WS3T-1213-4*-3	160	7/8	1/4	3918	128	3/4	3270	158	4013	8	203	2 1/2	64
WS3T-1214-4*-3	172	7/8	1/4	4223	140	3/4	3575	170	4318	8	203	2 1/2	64
WS3T-1215-4*-3	184	7/8	1/4		152	3/4	3880	182	4623	8	203	2 1/2	64

NOZZLE SCHEDULE

SERVICE	MARK	SHELL SIDE	MARK	TUBE SIDE
INLET	N1	AS PER TABLE	N5	3 (76) NPT
OUTLET	N2	AS PER TABLE	N6	3 (76) NPT
DRAIN	N3	1/2 (13) NPT	N7	1/2 (13) NPT
VENT	N4	3/4 (19) NPT		

- NOTES:
1. SUPPORTS SUPPLIED ONLY IF SPECIFIED ON ORDER.
 2. NOZZLE SIZES SHOWN ARE RECOMMENDED FOR MAX. EXCHANGER LIFE, NO EXTERNAL FORCES APPLY.
 3. FABRICATED TO ASME CODE SECTION VIII DIVISION 1 AND LATEST ADDENDA.
 4. DRAWING IS NOT TO SCALE.
 5. ALL DIM'S ±1/8 (3) UNLESS OTHERWISE SHOWN.

DESIGN CONDITIONS

	SHELL		TUBES	
DESIGN PRESSURE	150 PSIG	1034 KPa	300 PSIG	2068 KPa
DESIGN TEMPERATURE	375 °F	191 °C	375 °F	191 °C
MIN. DESIGN METAL TEMP.	35 °F	1.7 °C	35 °F	1.7 °C
HYDRO. TEST PRESSURE	225 PSIG	1551 KPa	450 PSIG	3102 KPa
CONTENTS	STEAM		WATER	

CUSTOMER:
LOCATION:

ENGINEER:
ORDER No.:
PROJECT/JOB:
LOCATION:

TAG: (QUOTE #)

TITLE	G.A. 300 LB. WS SERIES HEAT EXCHANGERS				A R M S T R O N G				NUMBER	REV.			
DATE:	04 / 05 / 01	BY:	J.R.	TEL :	(416) 755-2291	TEL :	(514) 421-2424	TEL :	(716) 693-8813	TEL :	{44} 120-657-9491	WS3T-12-4P-3	