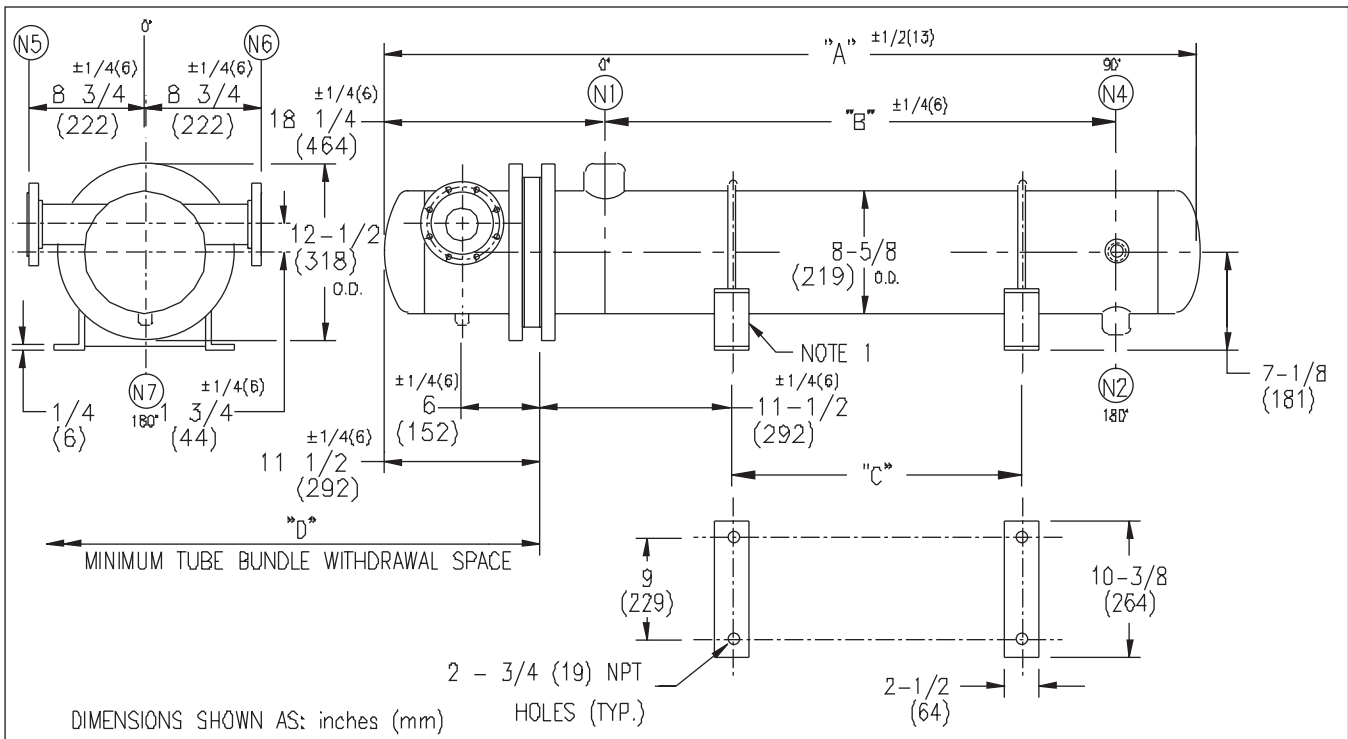


# ARMSTRONG®



EXCHANGER SIZE *-BAFFLE SPACING	DIMENSIONS											
	A		B		C		D		N1		N2	
	inches	mm	inches	mm	inches	mm	inches	mm	inches	mm	inches	mm
WS3T-82-4*-4	36 3/4	933	13	330	5 1/2	140	26	660	2	51	1	25
WS3T-83-4*-4	48 3/4	1238	25	635	17 1/2	445	38	965	2-1/2	64	1	25
WS3T-84-4*-4	60 3/4	1543	37	940	29 1/2	749	50	1270	3	76	1	25

NOZZLE SCHEDULE				
SERVICE	MARK	SHELL SIDE	MARK	TUBE SIDE
INLET	(N1)	AS PER TABLE	(N5)	2 (51) 300# FLG.
OUTLET	(N2)	AS PER TABLE	(N6)	2 (51) 300# FLG.
DRAIN			(N7)	1/2 (13) NPT
VENT	(N4)	3/4 (19) NPT		

NOTES: 1. SUPPORTS SUPPLIED ONLY IF SPECIFIED ON ORDER.  
 2. NOZZLE SIZES SHOWN ARE RECOMMENDED FOR MAX. EXCHANGER LIFE, NOEXTERNAL FORCES APPLY.  
 3. FABRICATED TO ASME CODE SECTION VIII DIVISION 1 AND LATEST ADDENDA.  
 4. DRAWING IS NOT TO SCALE.  
 5. ALL DIMN'S ±1/8 (3) UNLESS OTHERWISE SHOWN.

DESIGN CONDITIONS				
	SHELL		TUBES	
DESIGN PRESSURE	150 PSIG	1034 KPa	300 PSIG	2068 KPa
DESIGN TEMPERATURE	375 °F	191 °C	375 °F	191 °C
MIN. DESIGN METAL TEMP.	35 °F	1.7 °C	35 °F	1.7 °C
HYDRO. TEST PRESSURE	225 PSIG	1551 KPa	450 PSIG	3102 KPa
CONTENTS	STEAM		WATER	

CUSTOMER: \_\_\_\_\_  
 LOCATION: \_\_\_\_\_  
 ENGINEER: \_\_\_\_\_  
 ORDER No.: \_\_\_\_\_  
 PROJECT/JOB: \_\_\_\_\_  
 LOCATION: \_\_\_\_\_  
 TAG: \_\_\_\_\_ (QUOTE # \_\_\_\_\_)

TITLE: G.A. 300 LB. WS SERIES HEAT EXCHANGERS	<b>A R M S T R O N G</b>				NUMBER: WS3T-8-4P-4(3)	REV.:
DATE: D1 / 12 / D1 BY: J.R.	TORONTO - CANADA TEL: (416) 755-2291	MONTREAL - CANADA TEL: (514) 421-2424	BUFFALO - N. Y. TEL: (716) 693-8813	COLCHESTER - U.K. TEL: (44) 120-657-9491		