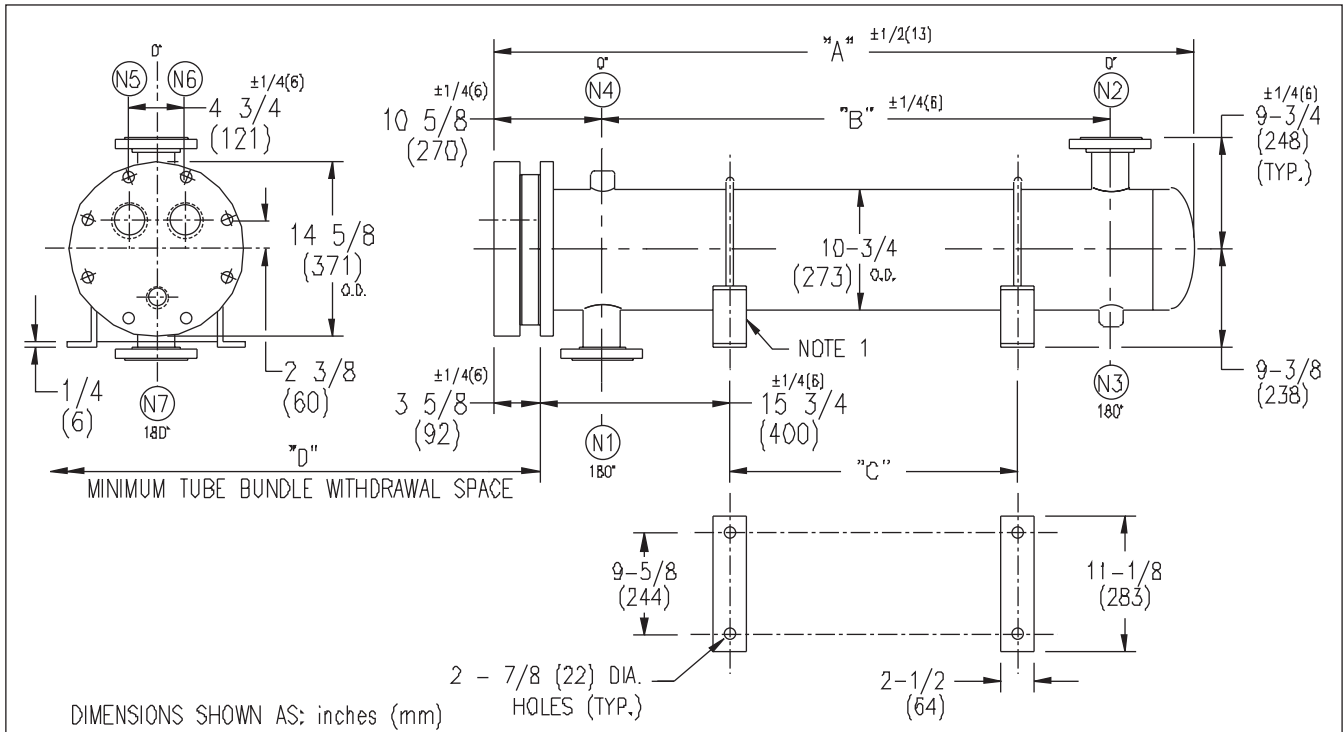


ARMSTRONG®



EXCHANGER SIZE *-BAFFLE SPACING	DIMENSIONS											
	A		B		C		D		N1		N2	
	inches	mm	inches	mm	inches	mm	inches	mm	inches	mm	inches	mm
W3T-102-4*-3	30 1/4	768	11 1/4	286	-	-	26	660	6	152	6	152
W3T-103-4*-3	42 1/4	1073	23 1/4	591	12	305	38	965	6	152	6	152
W3T-104-4*-3	54 1/4	1378	35 1/4	895	24	610	50	1270	6	152	6	152
W3T-105-4*-3	66 1/4	1682	47 1/4	1200	36	914	62	1574	6	152	6	152
W3T-106-4*-3	78 1/4	1987	59 1/4	1505	48	1219	74	1879	6	152	6	152
W3T-107-4*-3	90 1/4	2292	71 1/4	1810	60	1524	86	2184	6	152	6	152
W3T-108-4*-3	102 1/4	2597	83 1/4	2115	72	1829	98	2489	6	152	6	152
W3T-109-4*-3	114 1/4	2902	95 1/4	2419	84	2134	110	2794	6	152	6	152
W3T-1010-4*-3	126 1/4	3206	107 1/4	2724	96	2438	122	3098	6	152	6	152
W3T-1011-4*-3	138 1/4	3511	119 1/4	3029	108	2743	134	3403	6	152	6	152
W3T-1012-4*-3	150 1/4	3816	131 1/4	3334	120	3048	146	3708	6	152	6	152
W3T-1013-4*-3	162 1/4	4121	143 1/4	3639	132	3353	158	4013	6	152	6	152
W3T-1014-4*-3	174 1/4	4426	155 1/4	3943	144	3658	170	4318	6	152	6	152
W3T-1015-4*-3	186 1/4	4730	167 1/4	4248	156	3962	182	4623	6	152	6	152

NOZZLE SCHEDULE				
SERVICE	MARK	SHELL SIDE	MARK	TUBE SIDE
INLET	N1	AS PER TABLE	N5	3 (76) NPT
OUTLET	N2	AS PER TABLE	N6	3 (76) NPT
DRAIN	N3	1/2 (13) NPT	N7	1/2 (13) NPT
VENT	N4	3/4 (19) NPT		

- NOTES:
1. SUPPORTS SUPPLIED ONLY IF SPECIFIED ON ORDER.
 2. NOZZLE SIZES SHOWN ARE RECOMMENDED FOR MAX. EXCHANGER LIFE, NO EXTERNAL FORCES APPLY.
 3. FABRICATED TO ASME CODE SECTION VIII DIVISION 1 AND LATEST ADDENDA.
 4. DRAWING IS NOT TO SCALE.
 5. ALL DIMN'S ±1/8 (3) UNLESS OTHERWISE SHOWN.

DESIGN CONDITIONS				
	SHELL		TUBES	
DESIGN PRESSURE	150 PSIG	1034 KPa	300 PSIG	2068 KPa
DESIGN TEMPERATURE	375 °F	191 °C	375 °F	191 °C
MIN. DESIGN METAL TEMP.	35 °F	1.7 °C	35 °F	1.7 °C
HYDRO. TEST PRESSURE	225 PSIG	1551 KPa	450 PSIG	3102 KPa
CONTENTS	WATER		WATER	

CUSTOMER: _____
 LOCATION: _____
 ENGINEER: _____
 ORDER No.: _____
 PROJECT/JOB: _____
 LOCATION: _____
 TAG: _____ (QUOTE # _____)

TITLE	G.A. 300 LB. W SERIES HEAT EXCHANGERS				A R M S T R O N G				NUMBER	REV.
DATE: 02 / 16 / 01	BY: J.R.	TORONTO - CANADA TEL : (416) 755-2291	MONTREAL - CANADA TEL : (514) 421-2424	BUFFALO - N. Y. TEL : (716) 693-8813	COLCHESTER - U.K. TEL : (44) 120-657-9491	W3T-10-4P-3(6)				