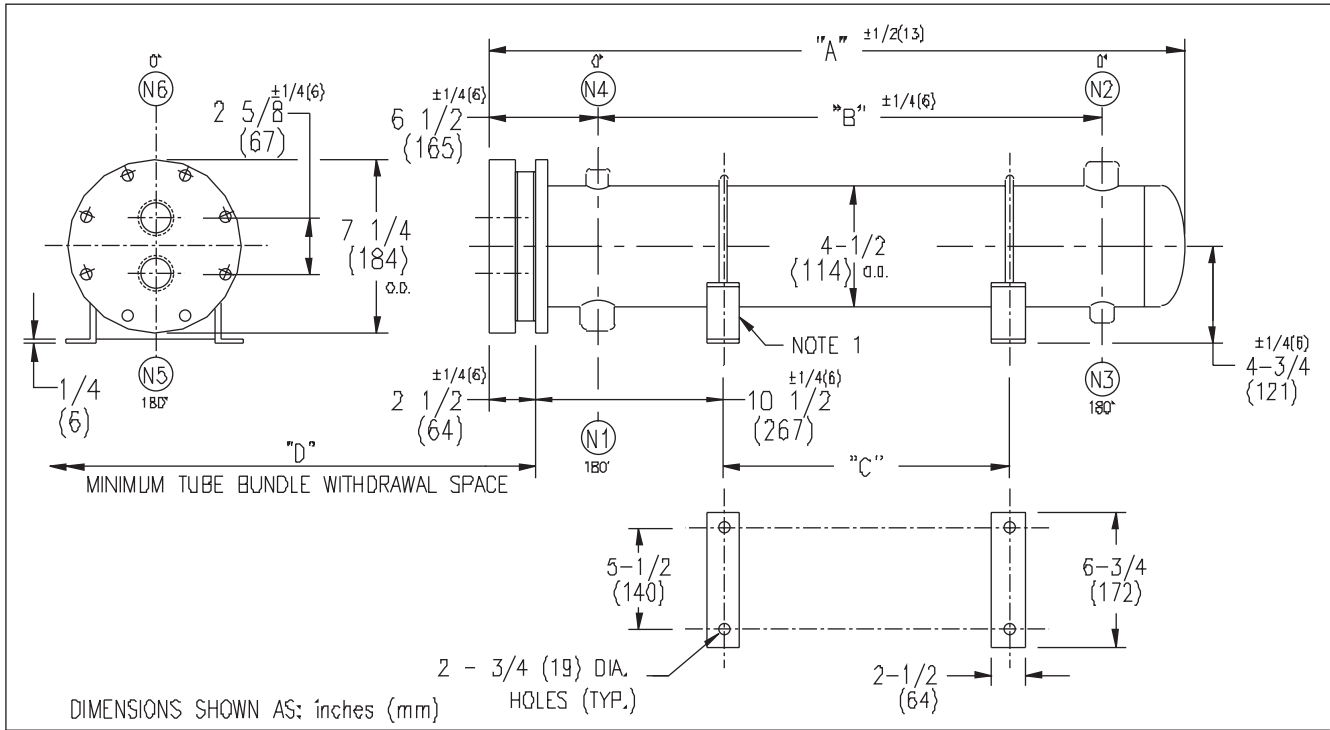


ARMSTRONG®



EXCHANGER SIZE *-BAFFLE SPACING	DIMENSIONS											
	A		B		C		D		N1		N2	
	inches	mm	inches	mm	inches	mm	inches	mm	inches	mm	inches	mm
W3T-42-2*-3	27 3/4	705	16 1/2	419	10	254	26	660	1 1/2	38	1 1/2	38
W3T-43-2*-3	39 3/4	1010	28 1/2	724	22	559	38	965	1 1/2	38	1 1/2	38
W3T-44-2*-3	51 3/4	1315	40 1/2	1029	34	864	50	1270	1 1/2	38	1 1/2	38
W3T-45-2*-3	63 3/4	1620	52 1/2	1334	46	1169	62	1575	1 1/2	38	1 1/2	38
W3T-46-2*-3	75 3/4	1924	64 1/2	1638	58	1473	74	1879	1 1/2	38	1 1/2	38
W3T-47-2*-3	87 3/4	2229	76 1/2	1943	70	1778	86	2184	1 1/2	38	1 1/2	38
W3T-48-2*-3	99 3/4	2534	88 1/2	2248	82	2083	98	2489	1 1/2	38	1 1/2	38
W3T-49-2*-3	111 3/4	2839	100 1/2	2553	94	2388	110	2794	1 1/2	38	1 1/2	38
W3T-410-2*-3	123 3/4	3144	112 1/2	2858	106	2693	122	3099	1 1/2	38	1 1/2	38

NOZZLE SCHEDULE				
SERVICE	MARK	SHELL SIDE	MARK	TUBE SIDE
INLET	N1	AS PER TABLE	N5	1 1/4 (32) NPT
OUTLET	N2	AS PER TABLE	N6	1 1/4 (32) NPT
DRAIN	N3	1/2 (13) NPT		
VENT	N4	3/4 (19) NPT		

NOTES: 1. SUPPORTS SUPPLIED ONLY IF SPECIFIED ON ORDER.
 2. NOZZLE SIZES SHOWN ARE RECOMMENDED FOR MAXIMUM EXCHANGER LIFE.
 3. FABRICATED TO ASME CODE SECTION VIII DIVISION 1 AND LATEST ADDENDA.
 4. DRAWING IS NOT TO SCALE.
 5. ALL DIM'S ±1/8 (3) UNLESS OTHERWISE SHOWN.

DESIGN CONDITIONS				
	SHELL		TUBES	
DESIGN PRESSURE	150 PSIG	1034 KP _a	300 PSIG	2068 KP _a
DESIGN TEMPERATURE	375 °F	191 °C	375 °F	191 °C
MIN. DESIGN METAL TEMP.	35 °F	1.7 °C	35 °F	1.7 °C
HYDRO. TEST PRESSURE	225 PSIG	1551 KP _a	450 PSIG	3102 KP _a
CONTENTS	WATER		WATER	

CUSTOMER:
 LOCATION:
 ENGINEER:
 ORDER No.:

PROJECT/JOB:
 LOCATION:
 TAG: (QUOTE #)

TITLE	A R M S T R O N G				NUMBER	REV.
G.A. 300 LB. W SERIES HEAT EXCHANGERS	TORONTO - CANADA	MONTREAL - CANADA	BUFFALO - N. Y.	COLCHESTER - U.K.	W3T-4-2P-3(1.5)	
DATE: 10 / 07 / 00 BY: J.R.	TEL: (416) 755-2291	TEL: (514) 421-2424	TEL: (716) 693-8813	TEL: (44) 120-657-9491		