

**VORTEX AIR SEPARATORS | MODELS VA/VAS |**  
**4" to 12" | SUBMITTAL**

File No: 37.621  
Date: SEPTEMBER 22, 2016  
Supersedes: 37.621  
Date: AUGUST 03, 2016

Job: \_\_\_\_\_ Representative: \_\_\_\_\_

\_\_\_\_\_ Order no.: \_\_\_\_\_ Date: \_\_\_\_\_

Engineer: \_\_\_\_\_ Submitted by: \_\_\_\_\_ Date: \_\_\_\_\_

Contractor: \_\_\_\_\_ Approved by: \_\_\_\_\_ Date: \_\_\_\_\_

**DATA**

Model no. ordered: \_\_\_\_\_ Qty: \_\_\_\_\_

Tag no.: \_\_\_\_\_

**MATERIALS OF CONSTRUCTION**

**Shell:** 4" to 6" Models: Cast Iron

8" to 12" Models: Fabricated Steel

**Strainer:** Stainless Steel mesh (¼" x ¾")

**Gasket:** Non-asbestos

**TECHNICAL DATA**

**Max. working temperature:** 375°F (190°C)

**Max. working pressure:** 4" to 6" Models: 160 PSI (1103 kPa)  
8" to 12" Models: 165 PSI (1140 kPa)

**Connection type:** 4" to 6" Models: 150# flanged ANSI flat face  
8" to 12" Models: 150# flanged ANSI raised face

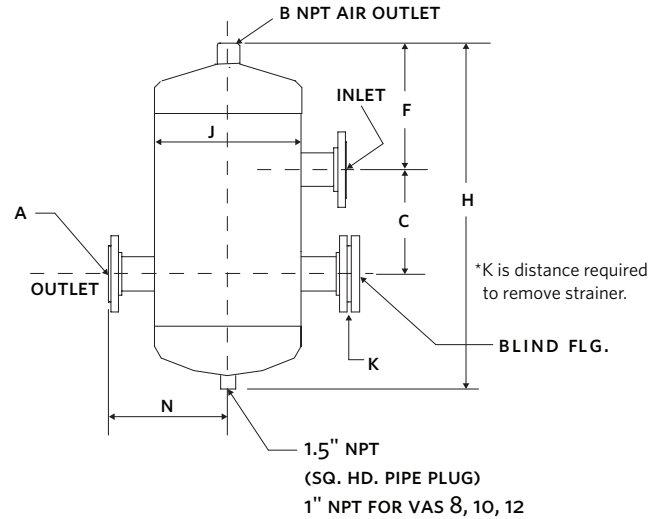
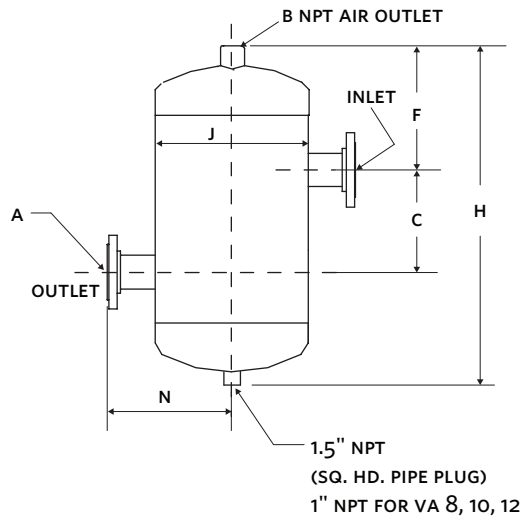
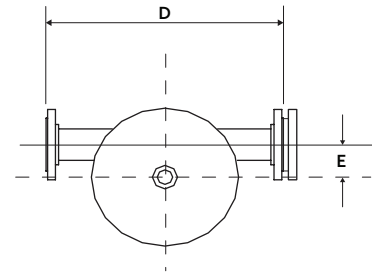
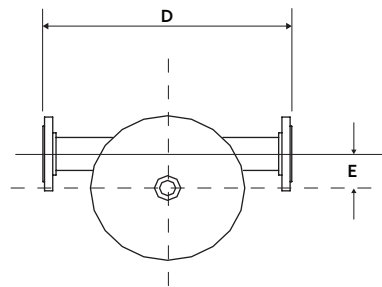
**TYPICAL SPECIFICATION**

Furnish & install an Armstrong Vortex® Air separator, Model \_\_\_\_\_ VA or model \_\_\_\_\_ VAS (with strainer) with flanged tangential connections as shown on plans. The unit shall be designed and built in accordance with the latest revisions of ASME Pressure vessel code, section VIII, Division 1. A blowdown connection is provided for routine cleaning of the unit.

**NOTES**

All models designed and built to ASME Pressure vessel code, section VIII, Division 1.

MODEL		DIMENSIONS inches (mm)										MAX. FLOW RATE IN USgpm (L/s) FOR LINE VELOCITY ft/s (m/s)			WEIGHT lbs. (kg)		STRAINER SCREEN FREE AREA
LESS STRAINER	WITH STRAINER	A	B	C	D	E	F	H	J	K	N	4 (1.22)	6 (1.83)	8 (2.44)	VA	VAS	Sq. in. (Sq. cm)
VA-4	VAS-4	4.00 (102)	1.50 (38)	9.50 (241)	18.00 (457)	2.25 (57)	6.80 (173)	22.25 (565)	10.75 (273)	16.00 (406)	9.00 (229)	160 (10.1)	240 (15.1)	320 (20.2)	121 (55)	151 (69)	76 (490)
VA-5	VAS-5	5.00 (127)	1.50 (38)	11.00 (279)	20.00 (508)	2.88 (73)	8.69 (221)	28.00 (711)	12.75 (324)	19.00 (483)	10.00 (254)	250 (9.84)	375 (14.8)	500 (31.6)	173 (79)	207 (94)	124 (800)
VA-6	VAS-6	6.00 (152)	1.50 (38)	12.50 (318)	24.00 (610)	4.00 (102)	9.85 (250)	32.24 (819)	16.00 (406)	22.00 (558)	12.00 (305)	360 (22.7)	540 (34.1)	720 (45.4)	264 (120)	306 (139)	183 (1181)
VA-8	VAS-8	8.00 (203)	2.00 (51)	16.00 (406)	28.00 (711)	5.00 (127)	12.81 (310)	41.25 (1048)	20.00 (508)	26.00 (660)	14.00 (356)	630 (39.8)	940 (59.3)	1250 (78.9)	228 (103)	332 (151)	302 (1949)
VA-10	VAS-10	10.00 (254)	2.00 (51)	20.00 (508)	32.00 (813)	5.75 (146)	15.00 (381)	49.50 (1257)	24.00 (610)	29.00 (737)	16.00 (406)	990 (62.5)	1500 (94.6)	1980 (124.9)	390 (177)	547 (248)	452 (2916)
VA-12	VAS-12	12.00 (305)	2.00 (51)	26.00 (660)	38.00 (965)	7.75 (197)	17.56 (446)	61.25 (1556)	30.00 (762)	36.00 (914)	19.00 (483)	1400 (88.3)	2100 (132.5)	2800 (176.7)	609 (276)	856 (388)	679 (4381)



TORONTO  
+1 416 755 2291

BUFFALO  
+1 716 693 8813

BIRMINGHAM  
+44 (0) 8444 145 145

MANCHESTER  
+44 (0) 8444 145 145

BANGALORE  
+91 (0) 80 4906 3555

SHANGHAI  
+86 21 3756 6696

SÃO PAULO  
+55 11 4781 5500

**MODEL VA**

**MODEL VAS**