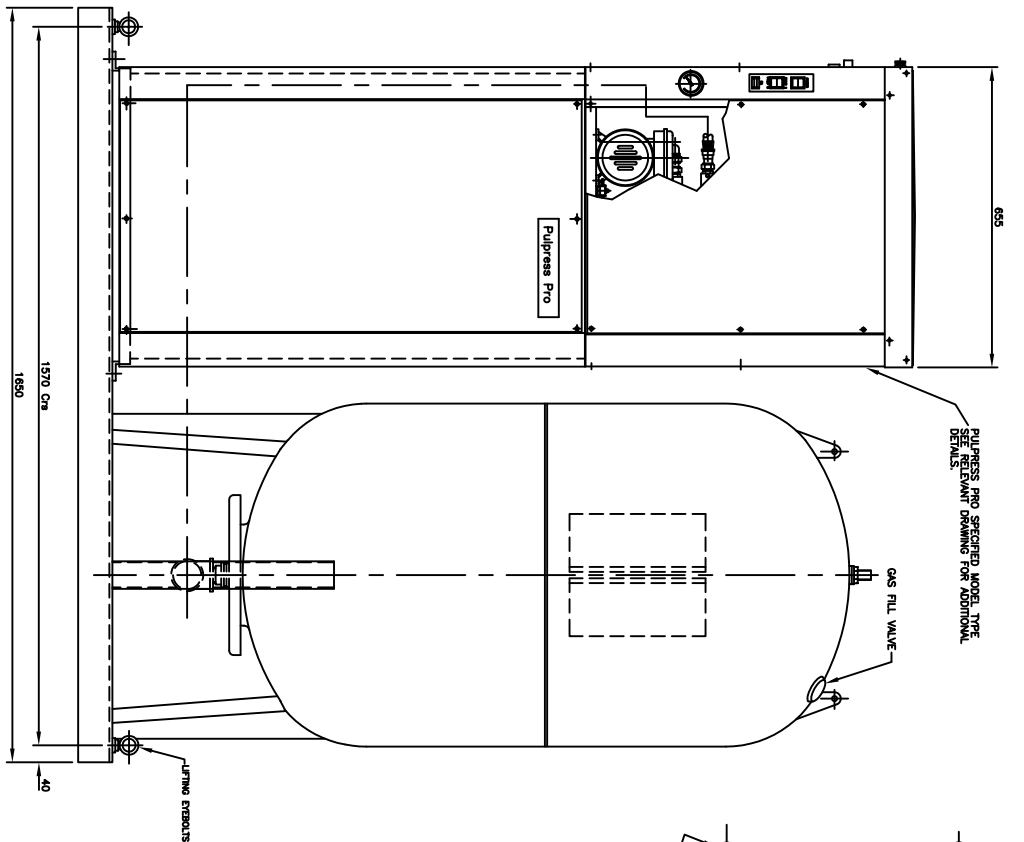
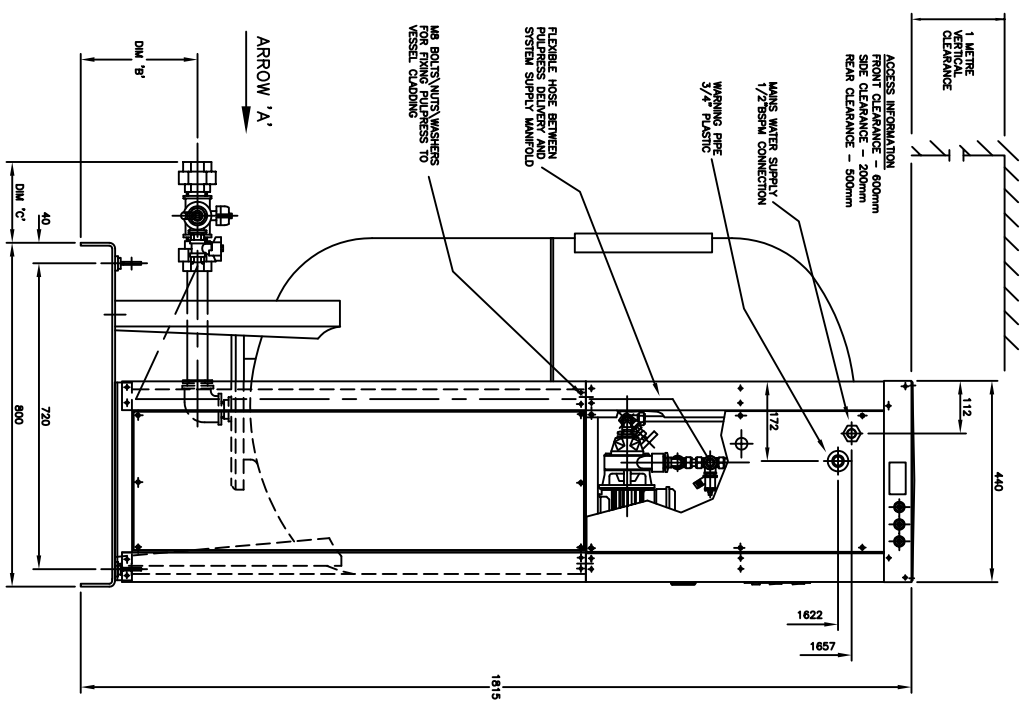


NOTE - PULPRESS UNITS MUST BE STORED IN A FROST-FREE ENVIRONMENT

UNCONTROLLED

Vessel Size	DNM 'B'	DNM 'C'	WT. Kg
200 Litre	275	40	208
300 Litre	245	40	220
500 Litre	260	40	276

NOTE: MATED PULPRESS WEIGHT SHOWN ABOVE IS WHEN USING 2.75BAR - 2 PUMP ENHANCED PULPRESS PRO PULPRESS



NOTES: DIMENSIONS IN MILLIMETRES UNLESS OTHERWISE STATED

LAST MODIFICATION DETAILS
DRAWING BORDER CHANGED

ISSUE DATE: 02/2006
CHK: PJB
APP: PJB

ALL DIMENSIONS IN mm
DRAWN TO BS308
WELDING SYMBOLS TO BS499
SURFACE FINISH SHOWN IN MICROMETERS
MACHINE WHERE SHOWN TO TOLERANCE ± 0.3MM UNLESS OTHERWISE STATED

JOB No.	PART No.	WEIGHT KG	FILE NAME
-	-	-	13728B

DESIGN No.	PATTERN No.	MATERIAL	MAT'L SPEC.
-	-	-	-

THIS DRAWING IS THE PRIVATE AND CONFIDENTIAL PROPERTY OF ARMSTRONG HOLDEN BROOKE PULLEN LTD. ALL COPYRIGHT, MANUFACTURING AND SALES RIGHTS RESERVED.

TITLE
DIMENSION & PROFILE DRAWING
PULPRESS PRO UNIT PACKAGED
IN CLADDING WITH 200-500 LITRE
REMOVABLE DIAPHRAGM VESSEL
BEPLATE MOUNTED

DRG No. 13728B
DATE 11/11/1997
CHK DJA
SCALE NTS

ARMSTRONG HOLDEN BROOKE PULLEN
MENLOK WAY, MANCHESTER, M12 5JL
TEL: +44 (0) 161 223 2223