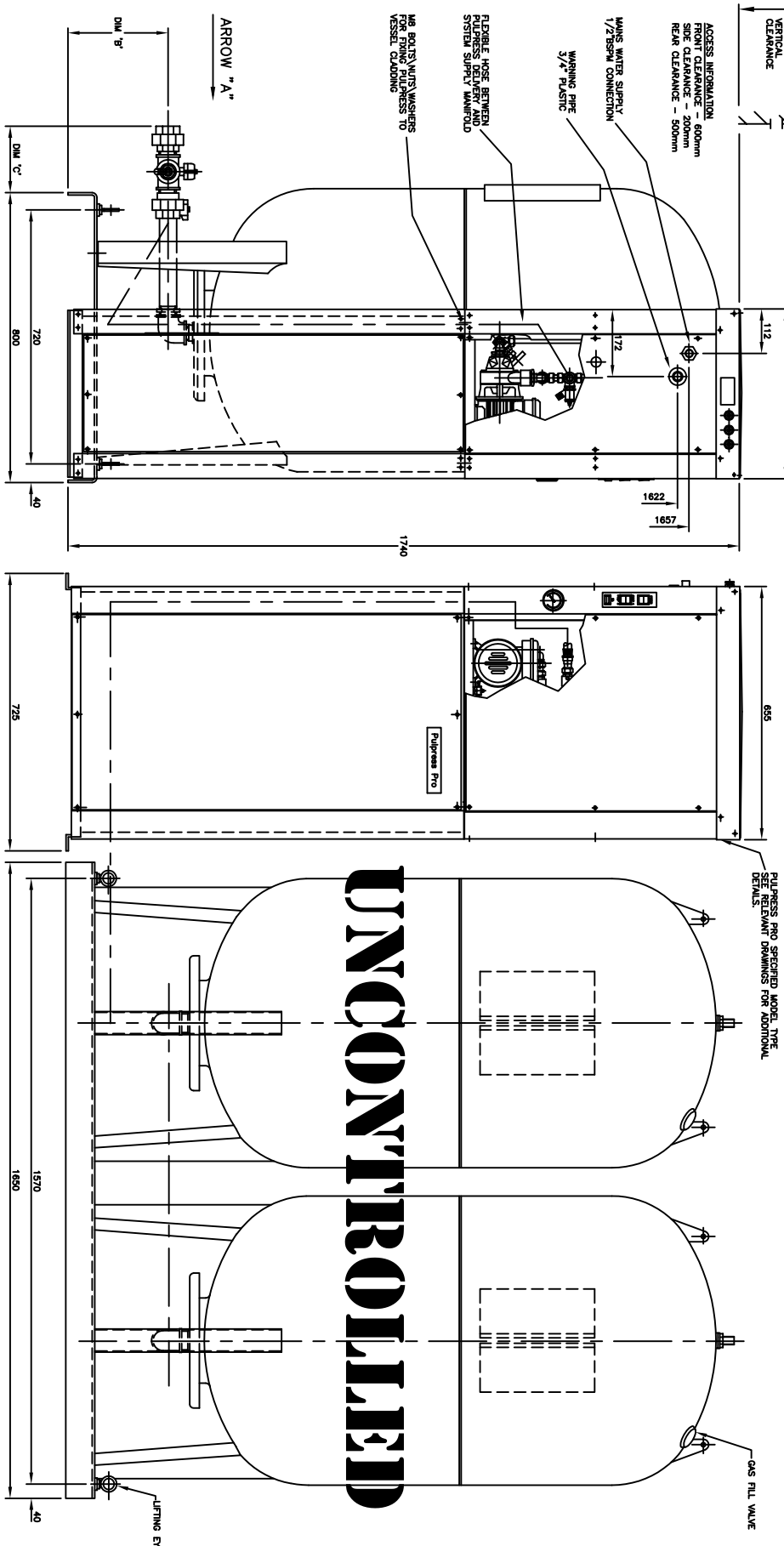
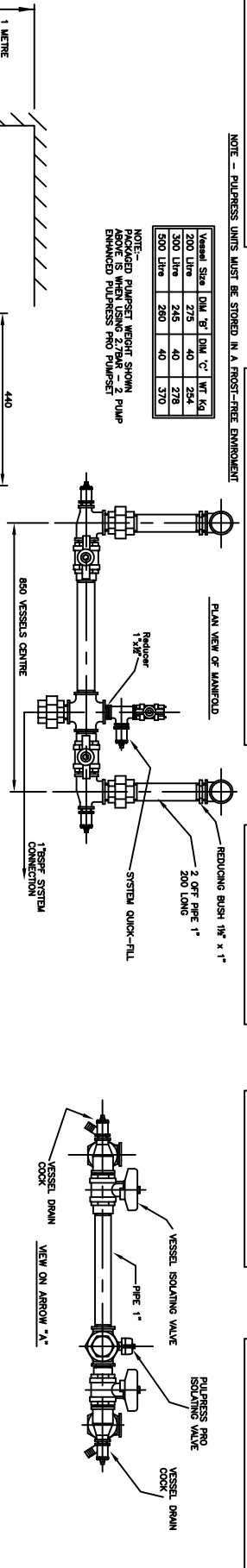


NOTE - PULPRESS UNITS MUST BE STORED IN A RUST-FREE ENVIRONMENT

Vessel Size	DM 'B'	DM 'C'	WT Kg
200 Litre	275	40	254
300 Litre	245	40	278
500 Litre	280	40	370

NOTE:- PACKAGED PULPRESS WEIGHT SHOWN ABOVE IS WHEN USING 278mm ENHANCED PULPRESS PRO PUMPS



NOTES: DIMENSIONS IN MILLIMETRES UNLESS OTHERWISE STATED

LAST MODIFICATION DETAILS

DRAWING BORDER CHANGED

ALL DIMENSIONS IN mm
DRAWN TO BS308
WELDING SYMBOLS TO BS499
SURFACE FINISH SHOWN IN
MICROMETERS
MACHINE WHERE SHOWN
TO TOLERANCE ± 0.3MM
UNLESS OTHERWISE STATED

JOB No.	PART No.	WEIGHT KG	FILE NAME
-	-	-	13729B
DESIGN No.	PATTERN No.	MATERIAL	MAT'L SPEC.
-	-	-	-

TITLE

DIMENSION & PROFILE DRAWING
PULPRESS PRO UNIT PACKAGED
IN CLADDING WITH 200-500 LITRE
REMOVABLE DIAPHRAGM VESSEL
BEPLATE MOUNTED

DRG No. 13729B

DATE 11/11/1997 DRN DF

CHK DUA APP EGU

SCALE NTS SHEET 1 OF 1

ARMSTRONG HOLDEN BROOKE PULLEN

WENLOCK WAY, MANCHESTER, M12 5JL
TEL: +44 (0) 161 223 2223