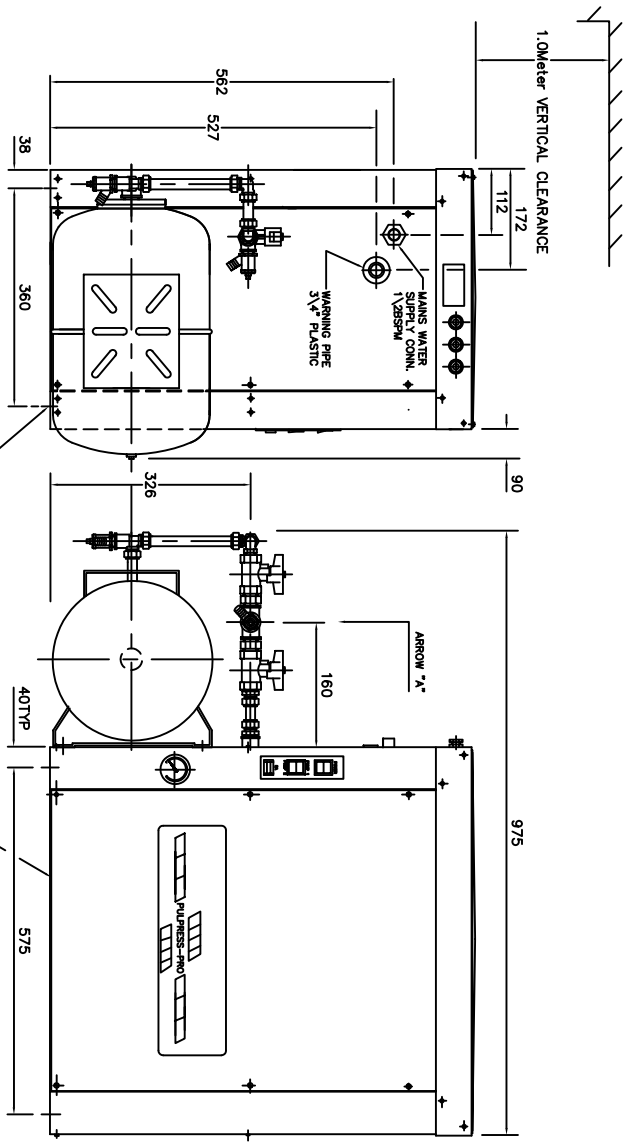
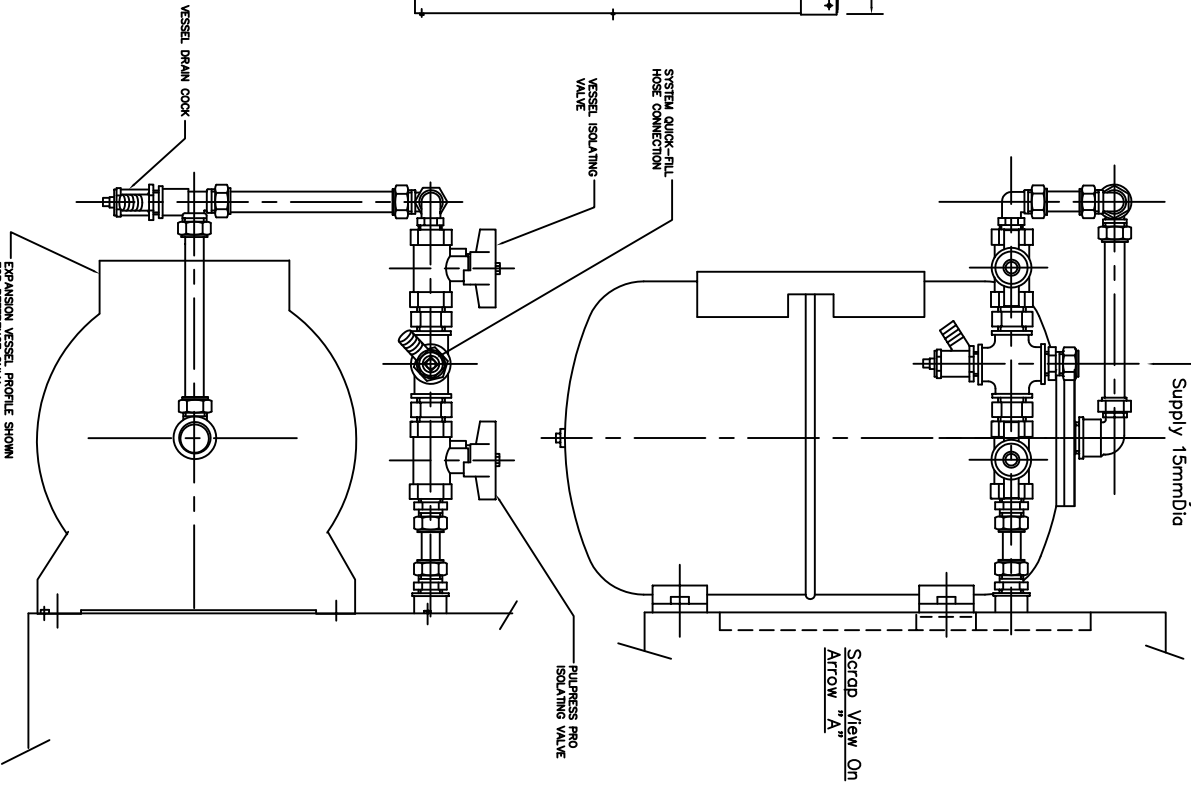


NOTE - PULPRESS UNITS MUST BE STORED AND SITED IN A FROST-FREE ENVIRONMENT
 PRODUCT WEIGHT - 71Kgs FOR 2PUMP, 2,7Bar ENHANCED MODEL WITH 24litre VESSEL



BASE MOUNTING FIXING HOLES 4 x 8mm DIA FOR 6mm FASTENINGS

PULPRESS PRO SPECIFIED MODEL TYPE-SEE RELEVANT PRODUCTION ASSEMBLY DRAWING FOR ADDITIONAL DETAILS



EXPANSION VESSEL PROFILE SHOWN FOR REFERENCE ONLY

UNCONTROLLED

NOTES: DIMENSIONS IN MILLIMETRES UNLESS OTHERWISE STATED
 1. COMPLETED SYSTEM TO BE PRESSURE TESTED TO 80 PSIG.
 2. FIREWORK TO BE ASSEMBLED USING PIPE TAPES AND PERMABOND.

LAST MODIFICATION DETAILS		JOB No.		PART No.		WEIGHT KG		FILE NAME		TITLE	
DRAWING BORDER CHANGED		-		-		-		13731A		DIMENSION & PROFILE DRAWING PULPRESS PRO UNIT PACKAGED WITH 1 x 24 LITRE REMOVABLE DIAPHRAGM VESSEL	
ISSUE DATE/02/2006(DRN PUB)		DESIGN No.		PATTERN No.		MATERIAL		MAT'L SPEC.		DRG No. 13731A	
A		-		-		-		-		DATE: 10/01/1998 DRN PDC	
CHK PUB		APP PUB		APP PUB		APP EGU		APP EGU		SCALE NTS	
APP PUB		APP PUB		APP PUB		APP EGU		APP EGU		SHEET 1 OF 1	
ARMSTRONG HOLDEN BROOKE PULLEN		ARMSTRONG HOLDEN BROOKE PULLEN		ARMSTRONG HOLDEN BROOKE PULLEN		ARMSTRONG HOLDEN BROOKE PULLEN		ARMSTRONG HOLDEN BROOKE PULLEN		MENLOK WAY, MANCHESTER, M12 5JL TEL: +44 (0) 161 223 2223	